

The information on the [Erudus System](#) has been supplied by the manufacturers of the products and, whilst the owners of the Erudus System take steps to ensure the information is regularly updated, they give no warranty and no guarantee that the information is accurate. Product information and ingredients may change, please always read product labels carefully in addition to using the information provided by Erudus One.

We do not accept liability for any inaccuracies or incorrect information contained on this site. Please visit <http://www.erudus.com/terms-and-conditions> for full terms and conditions.

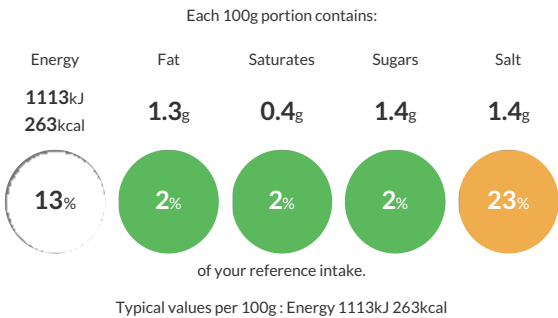
12 BATARDS WITH POPPY SEEDS 440 G

Short Product Name:
BATARDS WITH POPPY SEED

Product with 1 cut

Traded Unit GTIN: 3516870107109 Internal GTIN: Supplier : Planète Pain Suppliers Product Code : 10710 - PPPOB400

Reference Intake



Nutritional Information

| Typical Values | Per 100g |
|--------------------|-------------------|
| Energy | 1113kJ 263kCal |
| Carbohydrates | 52.7g |
| of which sugars | 1.4g |
| Fat | 1.3g |
| of which saturates | 0.4g |
| Fibre | -g |
| Protein | 8.8g |
| Salt | 1.4g |

Allergy Information

Key: Contains May Contain


Contains
Cereal/Gluten


May Contain
Milk


May Contain
Eggs


Does Not
Contain
Peanuts


May Contain
Nuts


Does Not
Contain
Crustaceans


Does Not
Contain
Mustard


Does Not
Contain
Fish


May Contain
Lupin


May Contain
Sesame


Does Not
Contain
Celery


May Contain
Soya


Does Not
Contain
Molluscs


Does Not
Contain
Sulphur
Dioxide

Dietary Information

Key: Suitable for


Suitable for
Vegetarian


Suitable for
Vegan


May not be
suitable for
Kosher


May not be
suitable for
Halal


May not be
suitable for
Coeliac

Ingredients

WHEAT flour, water, yeast, salt, WHEAT gluten, sugar, pregelatinized WHEAT flour, WHEAT malt flour, BARLEY malt extract, flour treatment agent E300, Topping : Poppy seeds (2.5%).