

Supplier's Product Code :  
 Product Added :  
 Last Updated by Supplier :  
 erudus id :

BC.CARGOLD2.5  
 10 April 2025  
 10 April 2025  
 721a5f6191be436abc991b3a4cd7d415



The information on the Erudus System has been supplied by the manufacturers of the products and, whilst the owners of the Erudus System take steps to ensure the information is regularly updated, they give no warranty and no guarantee that the information is accurate. Product information and ingredients may change, please always read product labels carefully in addition to using the information provided by Erudus One.

We do not accept liability for any inaccuracies or incorrect information contained on this site. Please visit <http://www.erudus.com/terms-and-conditions> for full terms and conditions.

## CHK-R30GOLD-E4-U70 2.5kg White Chocolate with Caramel Easimelt

Short Product Name:

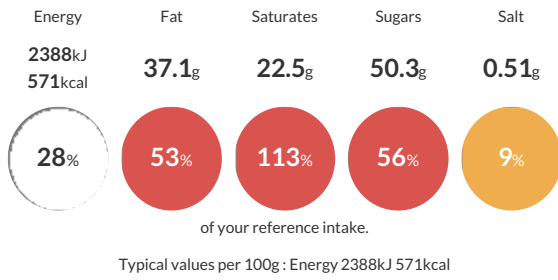
White Chocolate with Caramel Easimelt

CHK-R30GOLD-E4-U70 2.5kg White Chocolate with Caramel Easimelt - Callebaut BC.CARGOLD2.5

Traded Unit GTIN: **5410522555257** Internal GTIN: **5410522555257** Supplier: **HB Ingredients** Suppliers Product Code: **BC.CARGOLD2.5**

### Reference Intake

Each 100g portion contains:



### Nutritional Information

Typical Values	Per 100g
Energy	2388kJ 571kCal
Carbohydrates	50.8g
of which sugars	50.3g
Fat	37.1g
of which saturates	22.5g
Fibre	0g
Protein	8g
Salt	0.51g

### Allergy Information

Key: **Contains** **May Contain**



### Dietary Information

Key: **Suitable for**



### Ingredients

cocoa butter 30.0%, sugar 29.0%, whole MILK powder 25.0%, MILK sugar 5.5%, whey powder ( MILK) 5.0%, skimmed MILK powder 2.5%, caramelised sugar 2.0%, emulsifier: SOYA lecithin <1%, natural vanilla flavouring <1%, salt <1%.