

Supplier's Product Code :
Product Added :
Last Updated by Supplier :
erudus id :

012257P
29 May 2026
30 May 2026
72573074d0284470ae8b4c5e7e9da0c5



The information on the **Erudus System** has been supplied by the manufacturers of the products and, whilst the owners of the Erudus System take steps to ensure the information is regularly updated, they give no warranty and no guarantee that the information is accurate. Product information and ingredients may change, please always read product labels carefully in addition to using the information provided by Erudus One.

We do not accept liability for any inaccuracies or incorrect information contained on this site. Please visit <http://www.erudus.com/terms-and-conditions> for full terms and conditions.

Purple Pineapple Caribbean Beef 2.5kg

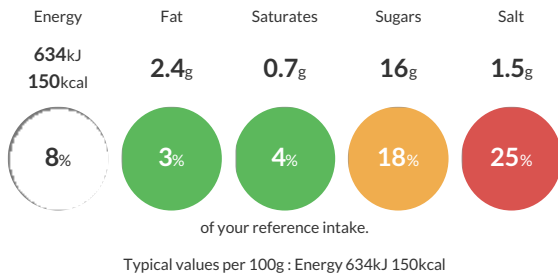
Short Product Name:
Caribbean Beef

Shredded beef brisket and sliced peppers mixed with a Caribbean style sauce.

Traded Unit GTIN: Internal GTIN: Supplier: Suppliers Product Code:

Reference Intake

Each 100g portion contains:



Nutritional Information

Typical Values	Per 100g
Energy	634kJ 150kCal
Carbohydrates	17g
of which sugars	16g
Fat	2.4g
of which saturates	0.7g
Fibre	1.6g
Protein	14g
Salt	1.5g

Allergy Information

Key: Contains May Contain



Dietary Information

Key: Suitable for



Ingredients

Beef Brisket (40%) [Beef, Salt], Jamaican Jerk (20%) [Water, Glucose Syrup Solids, Whey (Milk) Powder (Milk), Spirit Vinegar, Tomato Paste, Thickener Modified Starch (E1422), Vegetable Oil Rapeseed, Spice Allspice, Cayenne, Coriander, Cumin, Pepper, Salt, Dehydrated Vegetables Garlic, Red Pepper, Onion, Herbs Coriander Leaf, Mint, Oregano, Paprika Extract], Smokey **BBQ** Sauce (20%) [Sugar, Tomato Paste, Water, Spirit Vinegar, Molasses, Salt, Modified Starch, Dried Onion, Paprika, Dried Garlic, Dried Coriander, Smoke Flavourings, Black Pepper, Nutmeg, Natural Flavouring], Mixed Peppers (18%) [Red Peppers, Green Peppers, Yellow Peppers In Variable Proportions], Chillies (2%)

ALLERGY ADVICE: For allergens, see ingredients in Bold