

The information on the [Erudus System](#) has been supplied by the manufacturers of the products and, whilst the owners of the Erudus System take steps to ensure the information is regularly updated, they give no warranty and no guarantee that the information is accurate. Product information and ingredients may change, please always read product labels carefully in addition to using the information provided by Erudus One.

We do not accept liability for any inaccuracies or incorrect information contained on this site. Please visit <http://www.erudus.com/terms-and-conditions> for full terms and conditions.

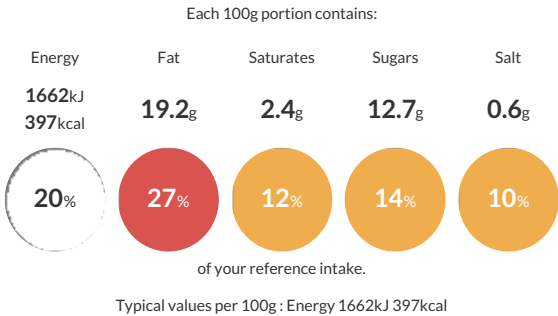
SIMPLY SCRUMMY REDUCED SUGAR MINI MUFFIN (50 x 48g e) - CHOCOLATE

Short Product Name:
MINI MUFFIN

Individually wrapped School Compliant Mini Muffin - Chocolate (Without any choc chips)

Traded Unit GTIN: 05024879010200 Internal GTIN: 5024879010101 Supplier : Handmade Speciality Products Limited Suppliers Product Code : RSCMMUFF

Reference Intake



Nutritional Information

Typical Values	Per 100g
Energy	1662kJ 397kCal
Carbohydrates	48.8g
of which sugars	12.7g
Fat	19.2g
of which saturates	2.4g
Fibre	2.4g
Protein	6.1g
Salt	0.6g

Allergy Information

Key: Contains May Contain

Contains
Cereal/Gluten

Contains
Milk

Contains
Eggs

Does Not
Contain
Peanuts

May Contain
Nuts

Does Not
Contain
Crustaceans

Does Not
Contain
Mustard

Does Not
Contain
Fish

Does Not
Contain
Lupin

Does Not
Contain
Sesame

Does Not
Contain
Celery

May Contain
Soya

Does Not
Contain
Molluscs

Does Not
Contain
Sulphur
Dioxide

Dietary Information

Key: Suitable for

Suitable for
Vegetarian

May not be
suitable for
Vegan

May not be
suitable for
Kosher

May not be
suitable for
Halal

NO DATA for
Coeliac

Allergen Statement

For allergens, including cereals containing **GLUTEN**, see ingredients in **BOLD**.
May also contain **NUTS** and **SOYA**.
SUITABLE FOR VEGETARIANS.

Ingredients

Fortified wheat flour (**WHEAT** flour, calcium carbonate, iron, nicotinamide, thiamin), Rapeseed oil, Chicory fibre, Water, Sugar, Humectant (glycerol), Whole **EGG** powder, Fat reduced cocoa powder (3%), Raising agents (calcium acid pyrophosphate, sodium carbonates, monocalcium phosphate), Dextrose, Whey powder (**MILK**), Modified potato starch, Preservative (potassium sorbate), Emulsifier (mono- and diglycerides of fatty acids), Salt, Acidity regulator (citric acid), Stabiliser (xanthan gum).