

The information on the **Erudus System** has been supplied by the manufacturers of the products and, whilst the owners of the Erudus System take steps to ensure the information is regularly updated, they give no warranty and no guarantee that the information is accurate. Product information and ingredients may change, please always read product labels carefully in addition to using the information provided by Erudus One.

We do not accept liability for any inaccuracies or incorrect information contained on this site. Please visit <http://www.erudus.com/terms-and-conditions> for full terms and conditions.

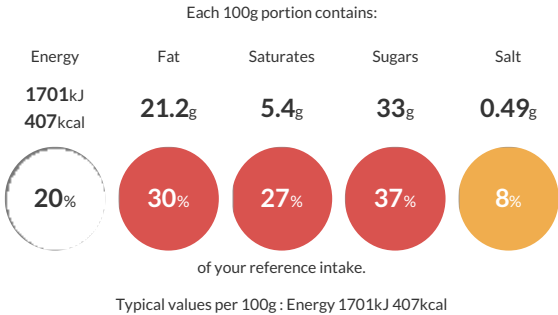
STICKY CHOCOLATE AND ORANGE CAKE

Short Product Name:
STICKY CHOCOLATE AND ORANGE CAKE

An orange sponge cake injected with orange curd in varying proportions and enrobed with chocolate flavour coating. The gateau is then finished with a drizzle of dark chocolate and orange coloured white chocolate. This cake is pre-portioned into 14 portions and packed 1 cake per outer.

Traded Unit GTIN: 5015091348561 Internal GTIN: Supplier : CDT Sidoli (Welshpool) Ltd Suppliers Product Code : 34856

Reference Intake



Nutritional Information

Typical Values	Per 100g
Energy	1701kJ 407kCal
Carbohydrates	49g
of which sugars	33g
Fat	21.2g
of which saturates	5.4g
Fibre	0.7g
Protein	4.1g
Salt	0.49g

Allergy Information

Key: **Contains** **May Contain**


Contains Cereal/Gluten


Contains Milk


Contains Eggs


Does Not Contain Peanuts


May Contain Nuts


Does Not Contain Crustaceans


Does Not Contain Mustard


Does Not Contain Fish


Does Not Contain Lupin


Does Not Contain Sesame


Does Not Contain Celery


Contains Soya


Does Not Contain Molluscs


Does Not Contain Sulphur Dioxide

Dietary Information

Key: **Suitable for**


Suitable for Vegetarian


May not be suitable for Vegan


May not be suitable for Kosher


May not be suitable for Halal


May not be suitable for Coeliac

Allergen Statement
MADE IN A FACTORY THAT ALSO HANDLES THE FOLLOWING ALLERGEN: NUTS

Ingredients

Sugar, **WHEAT** flour (with added calcium, iron, niacin, thiamin), **EGG**, rapeseed oil, glucose syrup, palm kernel oil, modified maize starch, **EGG** yolk, concentrated orange juice (1%), **MILK** protein, raising agents (diphosphates, potassium carbonates), dark chocolate (1%) (cocoa mass, sugar, cocoa butter, emulsifier (**SOYA** lecithin), natural vanilla flavouring), natural colours (beetroot red, beta carotene, paprika extract), white chocolate (sugar, cocoa butter, whole **MILK** powder, emulsifier (**SOYA** lecithin), natural vanilla flavouring), fat reduced cocoa powder, margarine (palm oil, rapeseed oil, water, emulsifier (mono- and diglycerides of fatty acids), natural flavouring), emulsifiers (mono- and diglycerides of fatty acids, sodium stearyl-2-lactylate, **SOYA** lecithin), palm oil, **WHEAT** protein, **WHEAT** starch, natural flavouring, flavouring, acidity regulator (citric acid), preservative (potassium sorbate).