

Supplier's Product Code : 13371173  
 Product Added : 26 February 2026  
 Last Updated by Supplier : 26 February 2026  
 erudus id : 73635655390f4dfaafe0b97d51a9cca9



The information on the **Erudus System** has been supplied by the manufacturers of the products and, whilst the owners of the Erudus System take steps to ensure the information is regularly updated, they give no warranty and no guarantee that the information is accurate. Product information and ingredients may change, please always read product labels carefully in addition to using the information provided by Erudus One.

We do not accept liability for any inaccuracies or incorrect information contained on this site. Please visit <http://www.erudus.com/terms-and-conditions> for full terms and conditions.

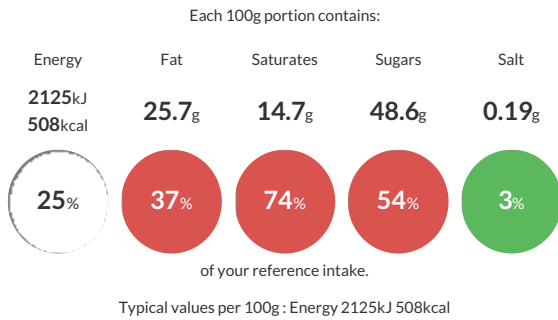
## NESTLE The Big Biscuit Box 69 Pcs

Short Product Name:  
 NESTLE Big Biscuit Box. NESTLE KIT KAT and friends.

An assortment of 69 chocolate biscuit bars including KIT KAT , BLUE RIBAND and TOFFEE CRISP.

Traded Unit GTIN: **08445290576095** Internal GTIN: **08445290576095** Supplier: **Nestle UK** Suppliers Product Code: **13371173**

### Reference Intake



### Nutritional Information

Typical Values	Per 100g
Energy	2125kJ 508kCal
Carbohydrates	62.1g
of which sugars	48.6g
Fat	25.7g
of which saturates	14.7g
Fibre	2.6g
Protein	5.6g
Salt	0.19g

### Allergy Information

Key: **Contains** **May Contain**



### Dietary Information

Key: **Suitable for**



### Allergen Statement

**BLUE RIBAND & TOFFEE CRISP** may contain **PEANUTS, TREE NUTS** and **SOYA**.

### Ingredients

Kit Kat 2F Milk:

Sugar, **WHEAT** Flour (**WHEAT** flour, Calcium, Niacin, Iron, Folic acid,Thiamin), Skimmed **MILK** Powder, Cocoa Mass, Cocoa Butter, Vegetable Fats, Palm, Shea, Palm Kernel, Sal), Whey Powder Product (**MILK**), Butterfat (**MILK**), Emulsifier (Lecithins), Yeast, Raising Agent (Sodium Bicarbonate), Glucose Syrup, Whey Powder (**MILK**), Natural Flavourings

Kit Kat 2F Orange:

Sugar, **WHEAT** Flour (**WHEAT** flour, Calcium, Niacin, Iron, Folic acid,Thiamin), Skimmed **MILK** Powder, Cocoa Mass, Cocoa Butter, Vegetable Fats, Palm, Shea, Palm Kernel, Sal), Whey Powder Product (**MILK**), Butterfat (**MILK**), Emulsifier (Lecithins), Yeast, Raising Agent (Sodium Bicarbonate), Glucose Syrup, Whey Powder (**MILK**), Natural Flavourings

Kit Kat 2F Dark:

Sugar, **WHEAT** Flour (**WHEAT** flour, Calcium, Niacin, Iron, Folic acid,Thiamin), Vegetable Fats (Palm, Palm Kernel, Shea, Sal), Cocoa Butter, Butterfat (**MILK**), Emulsifier (Lecithins), Skimmed **MILK** Powder, Whey Powder Product (**MILK**), Yeast, Raising Agent (Sodium Bicarbonate), Whole **MILK** Powder (**MILK**), Glucose Syrup, Whey Powder (**MILK**), Natural Flavourings

Blue Riband:

Sugar, Vegetable Fats (Palm, Shea), **WHEAT** Flour, Whole **MILK** Powder, Cocoa Mass, Whey Powder Product (**MILK**), Maltodextrin, Emulsifier (Lecithins), Fat-Reduced Cocoa Powder, Natural Flavourings, Raising Agent (Sodium Bicarbonate), Salt

Toffee Crisp:

Sugar, Vegetable Fats (Palm, Coconut, Shea, Sunflower), Glucose-Fructose Syrup, Whey Powder Product (**MILK**), Sweetened Skimmed condensed **MILK** (skimmed **MILK**, Sugar, Lactose **MILK**), Rice Flour, **WHEAT** flour, Whole **MILK**, Cocoa Mass, Fat-Reduced Cocoa Powder, Emulsifier (Lecithins), Salt, Natural flavourings, Caramelised Sugar, Raising Agent (Sodium Bicarbonate), **WHEAT** Starch

Rainforest Alliance Certified Cocoa.