

The information on the [Erudus System](#) has been supplied by the manufacturers of the products and, whilst the owners of the Erudus System take steps to ensure the information is regularly updated, they give no warranty and no guarantee that the information is accurate. Product information and ingredients may change, please always read product labels carefully in addition to using the information provided by Erudus One.

We do not accept liability for any inaccuracies or incorrect information contained on this site. Please visit <http://www.erudus.com/terms-and-conditions> for full terms and conditions.

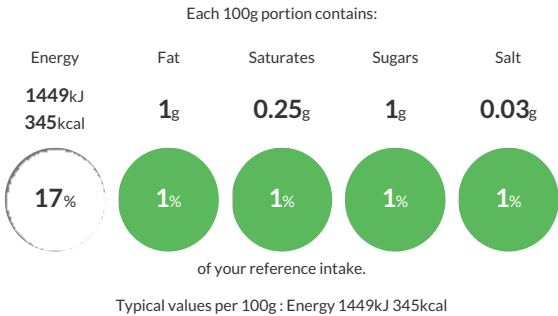
Cambray Farfalle Bows 4x3kg

Short Product Name:
Farfalle Bows

Farfalle Bow Pasta

Traded Unit GTIN: 5060202773756 Internal GTIN: 5060202773749 Supplier : BW Catering Products Suppliers Product Code : PT08

Reference Intake



Nutritional Information

Typical Values	Per 100g
Energy	1449kJ 345kCal
Carbohydrates	73g
of which sugars	1g
Fat	1g
of which saturates	0.25g
Fibre	0.4g
Protein	12g
Salt	0.03g

Allergy Information

Key: Contains May Contain


Contains Cereal/Gluten


Does Not Contain Milk


Does Not Contain Eggs


Does Not Contain Peanuts


Does Not Contain Nuts


Does Not Contain Crustaceans


Does Not Contain Mustard


Does Not Contain Fish


Does Not Contain Lupin


Does Not Contain Sesame


Does Not Contain Celery


Does Not Contain Soya


Does Not Contain Molluscs


Does Not Contain Sulphur Dioxide

Allergen Statement
This product contains **WHEAT**

Ingredients

100% Durum **WHEAT** Semolina

Dietary Information

Key: Suitable for


Suitable for Vegetarian


Suitable for Vegan


Suitable for Kosher


Suitable for Halal


NO DATA for Coeliac