

The information on the [Erudus System](#) has been supplied by the manufacturers of the products and, whilst the owners of the Erudus System take steps to ensure the information is regularly updated, they give no warranty and no guarantee that the information is accurate. Product information and ingredients may change, please always read product labels carefully in addition to using the information provided by Erudus One.

We do not accept liability for any inaccuracies or incorrect information contained on this site. Please visit <http://www.erudus.com/terms-and-conditions> for full terms and conditions.

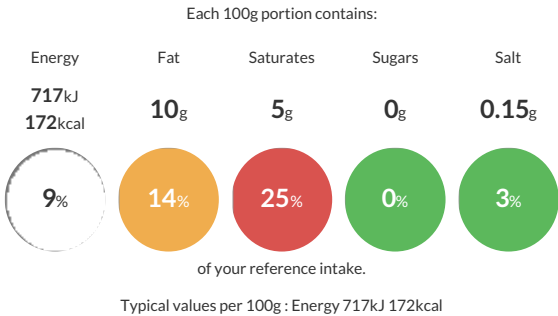
Sysco Classic Beef Ribeye Steak

Short Product Name:
Beef Ribeye Steak

Beef Ribeye Steak

Traded Unit GTIN: - Internal GTIN: 05024333265115 Supplier : Sysco GB Limited Suppliers Product Code: 136120

Reference Intake



Nutritional Information

Typical Values	Per 100g
Energy	717kJ 172kCal
Carbohydrates	0g
of which sugars	0g
Fat	10g
of which saturates	5g
Fibre	-g
Protein	20g
Salt	0.15g

Allergy Information

Key: Contains May Contain



Does Not Contain Cereal/Gluten



Does Not Contain Milk



Does Not Contain Eggs



Does Not Contain Peanuts



Does Not Contain Nuts



Does Not Contain Crustaceans



Does Not Contain Mustard



Does Not Contain Fish



Does Not Contain Lupin



Does Not Contain Sesame



Does Not Contain Celery



Does Not Contain Soya



Does Not Contain Molluscs



Does Not Contain Sulphur Dioxide

Dietary Information

Key: Suitable for



NO DATA for Vegetarian



NO DATA for Vegan



NO DATA for Kosher



NO DATA for Halal



NO DATA for Coeliac

Ingredients

Beef