

The information on the [Erudus System](#) has been supplied by the manufacturers of the products and, whilst the owners of the Erudus System take steps to ensure the information is regularly updated, they give no warranty and no guarantee that the information is accurate. Product information and ingredients may change, please always read product labels carefully in addition to using the information provided by Erudus One.

We do not accept liability for any inaccuracies or incorrect information contained on this site. Please visit <http://www.erudus.com/terms-and-conditions> for full terms and conditions.

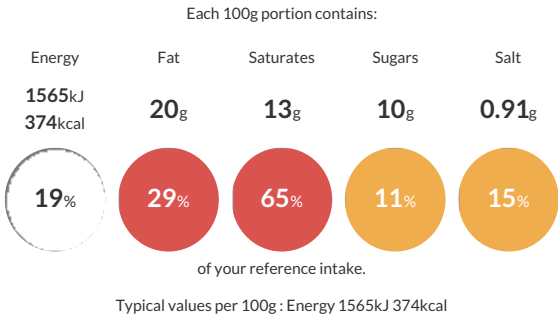
70 PAINS AU CHOCOLAT 75g

Short Product Name:  
PAIN AU CHOCOLAT

Ready to bake frozen, fine butter pains au chocolat 75g

Traded Unit GTIN: 03419280017320 Internal GTIN: Supplier: Bridor Suppliers Product Code: 32557

Reference Intake



Nutritional Information

| Typical Values     | Per 100g          |
|--------------------|-------------------|
| Energy             | 1565kJ<br>374kCal |
| Carbohydrates      | 40g               |
| of which sugars    | 10g               |
| Fat                | 20g               |
| of which saturates | 13g               |
| Fibre              | 2.6g              |
| Protein            | 7.3g              |
| Salt               | 0.91g             |

Allergy Information

Key: Contains May Contain

  
Contains  
Cereal/Gluten

  
Contains  
Milk

  
Contains  
Eggs

  
Does Not  
Contain  
Peanuts

  
May Contain  
Nuts

  
Does Not  
Contain  
Crustaceans

  
Does Not  
Contain  
Mustard

  
Does Not  
Contain  
Fish

  
Does Not  
Contain  
Lupin

  
May Contain  
Sesame

  
Does Not  
Contain  
Celery

  
Contains  
Soya

  
Does Not  
Contain  
Molluscs

  
Does Not  
Contain  
Sulphur  
Dioxide

Dietary Information

Key: Suitable for

  
Suitable for  
Vegetarian

  
May not be  
suitable for  
Vegan

  
May not be  
suitable for  
Kosher

  
Suitable for  
Halal

  
May not be  
suitable for  
Coeliac

**Allergen Statement**  
For allergens, including cereals containing gluten, see ingredients in capital letters.  
May contain traces of: traces of nuts, traces of sesame seeds

Ingredients

WHEAT flour, BUTTER 20.9%, water, chocolate 9.3% (sugar, cocoa mass, cocoa butter, emulsifier (E322 (SOYA lecithin)), natural vanilla flavour), yeast, sugar, EGGS, salt, wheat GLUTEN, flour treatment agents (alpha-amylases, hemicellulases, E300), EGG wash (EGGS, water).