

The information on the [Erudus System](#) has been supplied by the manufacturers of the products and, whilst the owners of the Erudus System take steps to ensure the information is regularly updated, they give no warranty and no guarantee that the information is accurate. Product information and ingredients may change, please always read product labels carefully in addition to using the information provided by Erudus One.

We do not accept liability for any inaccuracies or incorrect information contained on this site. Please visit <http://www.erudus.com/terms-and-conditions> for full terms and conditions.

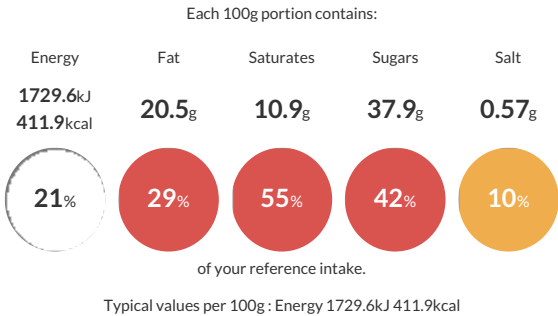
Queen Vic TrayCAKE - 6 x 18 ptns

Short Product Name:
Queen Vic TrayCAKE

A pale golden vanilla sponge with a whipped buttercream and de-seeded house made raspberry jam filling. Finished with snow dust. Portioned into 18 slices per tray. 6 trays per case.

Traded Unit GTIN: 5060310741708 Internal GTIN: 5060310741692 Supplier : Cakesmiths Group Limited Suppliers Product Code: K4081

Reference Intake



Nutritional Information

Typical Values	Per 100g
Energy	1729.6kJ 411.9kCal
Carbohydrates	53.5g
of which sugars	37.9g
Fat	20.5g
of which saturates	10.9g
Fibre	1.2g
Protein	3.9g
Salt	0.57g

Allergy Information

Key: Contains May Contain


Contains Cereal/Gluten


Contains Milk


Contains Eggs


May Contain Peanuts


May Contain Nuts


Does Not Contain Crustaceans


Does Not Contain Mustard


Does Not Contain Fish


Does Not Contain Lupin


May Contain Sesame


Does Not Contain Celery


May Contain Soya


Does Not Contain Molluscs


May Contain Sulphur Dioxide

Allergen Statement
Made in our bakery that handles cereals containing gluten, milk, egg, soya, sulphites, and tree nuts (source manufacturer may handle peanuts and sesame).

Ingredients

Sugar, **WHEAT** flour (**WHEAT** flour, calcium carbonate, iron, niacin, thiamin), salted butter (butter (**MILK**), salt), icing sugar, **EGG**, raspberries 6%, double cream (**MILK**), whole **MILK**, rapeseed oil, raising agents (diphosphates, sodium bicarbonate), snow dusting (dextrose, **WHEAT** starch, vegetable oils (sustainable palm, rapeseed), salt, natural flavouring), vanilla extract, vanilla paste.