

The information on the [Erudus System](#) has been supplied by the manufacturers of the products and, whilst the owners of the Erudus System take steps to ensure the information is regularly updated, they give no warranty and no guarantee that the information is accurate. Product information and ingredients may change, please always read product labels carefully in addition to using the information provided by Erudus One.

We do not accept liability for any inaccuracies or incorrect information contained on this site. Please visit <http://www.erudus.com/terms-and-conditions> for full terms and conditions.

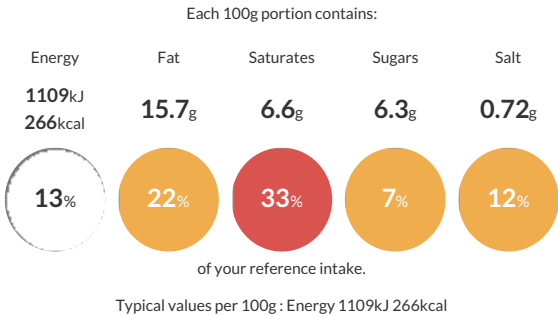
## Beetroot Wellington 225g x 16

Short Product Name:  
Beetroot Wellington

A Beetroot mix encased in puff pastry.

Traded Unit GTIN: **5055775108029** Internal GTIN: Supplier: **Scheff Foods Ltd** Suppliers Product Code: **BWEL225**

### Reference Intake



### Nutritional Information

Typical Values	Per 100g
Energy	1109kJ 266kCal
Carbohydrates	23.9g
of which sugars	6.3g
Fat	15.7g
of which saturates	6.6g
Fibre	2.5g
Protein	5.9g
Salt	0.72g

### Allergy Information


Key: Contains May Contain

  
Contains Cereal/Gluten

  
Does Not Contain Milk

  
Does Not Contain Eggs

  
Does Not Contain Peanuts


  
May Contain Nuts


  
Does Not Contain Crustaceans

  
Does Not Contain Mustard


  
Does Not Contain Fish

  
Does Not Contain Lupin

  
Does Not Contain Sesame

  
Does Not Contain Celery

  
Contains Soya

  
Does Not Contain Molluscs

  
Does Not Contain Sulphur Dioxide

### Dietary Information

Key: Suitable for

  
Suitable for Vegetarian

  
Suitable for Vegan

  
May not be suitable for Kosher

  
May not be suitable for Halal

  
NO DATA for Coeliac

### Ingredients

Puff Pastry (Contains: Fortified **WHEAT** Flour (Calcium Carbonate, Iron, Niacin, Thiamin), Margarine (Palm Oil, Water, Rapeseed Oil, Salt), Water) (52%), Beetroot (23%), Onion, **SOYA** Mince, Rapeseed Oil, Tomato Puree, Red Wine Vinegar, Cornflour, Sugar, Garlic Puree, Vital **WHEAT** Gluten, Herbs and Spices, Lemon Juice, Salt, Vegetable Gravy Mix (Contains: Modified Maize Starch, Cornflour, Salt, Hydrolysed **SOYA** & Maize Protein, Flavouring, Yeast Extract, Dried Glucose Syrup, Colour E150c, Sugar, Palm Fat Powder), Fortified **WHEAT** Flour (Contains: Calcium Carbonate, Niacin, Iron, Thiamin), Acid E330, Gravy Browning (Contains: Water, Colour E150c, Salt) and Natural Smoke Flavouring.