

The information on the [Erudus System](#) has been supplied by the manufacturers of the products and, whilst the owners of the Erudus System take steps to ensure the information is regularly updated, they give no warranty and no guarantee that the information is accurate. Product information and ingredients may change, please always read product labels carefully in addition to using the information provided by Erudus One.

We do not accept liability for any inaccuracies or incorrect information contained on this site. Please visit <http://www.erudus.com/terms-and-conditions> for full terms and conditions.

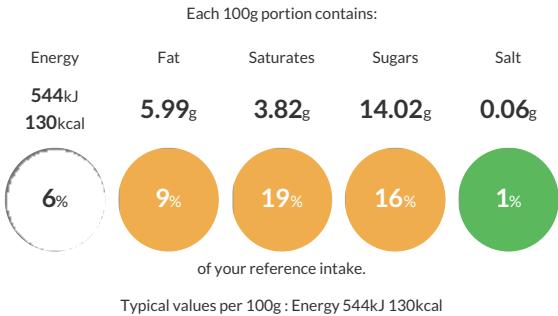
Caramel Honeycomb : 4 x 5 litre

Short Product Name:  
Caramel Honeycomb

Caramel Honeycombe Ice Cream - A natural creamy Ice Cream swirled with caramel sauce and chocolate coated honeycomb pieces.

Traded Unit GTIN: - Internal GTIN: 5060016670777 Supplier : Yorvale Ltd Suppliers Product Code: CARHON4x5 - Orig

Reference Intake



Nutritional Information

Typical Values	Per 100g
Energy	544kJ 130kCal
Carbohydrates	16.76g
of which sugars	14.02g
Fat	5.99g
of which saturates	3.82g
Fibre	-g
Protein	2.28g
Salt	0.06g

Allergy Information

Key: Contains May Contain

  
Does Not Contain Cereal/Gluten

  
Contains Milk

  
Does Not Contain Eggs

  
Does Not Contain Peanuts

  
May Contain Nuts

  
Does Not Contain Crustaceans

  
Does Not Contain Mustard

  
Does Not Contain Fish

  
Does Not Contain Lupin

  
Does Not Contain Sesame

  
Does Not Contain Celery

  
Contains Soya

  
Does Not Contain Molluscs

  
Does Not Contain Sulphur Dioxide

Dietary Information

Key: Suitable for

  
Suitable for Vegetarian

  
May not be suitable for Vegan

  
May not be suitable for Kosher

  
May not be suitable for Halal

  
NO DATA for Coeliac

**Allergen Statement**  
This product has been made in a factory that handles nut ingredients.

Ingredients

whole MILK, double cream (MILK), sugar, caramel sauce (8%) : (sweetened condensed skimmed MILK, glucose syrup, caramel syrup, colour:burnt sugar syrup. water,sugar, salted butter ( MILK).  
Stabiliser:modified waxy maize starch. sea salt, natural flavouring, emulsifier: mono & di glycerides of fatty acids). MILK chocolate honeycomb (8%): (MILK )chocolate:sugar,cocoa butter, cocoa mass, skimmed MILK powder,MILK sugar, whey powder (MILK). anhydrous MILK fat, emulsifier: SOYA lecithin. honeycomb granules: sugar, glucose syrup, water, raising agent:E500. glazing agent, stabiliserE414, sucrose, honey). skimmed MILK powder, glucose syrup, emulsifier: mono glycerides of fatty acids. stabiliser: guar gum, carrageenan, locust bean gum.