

The information on the [Erudus System](#) has been supplied by the manufacturers of the products and, whilst the owners of the Erudus System take steps to ensure the information is regularly updated, they give no warranty and no guarantee that the information is accurate. Product information and ingredients may change, please always read product labels carefully in addition to using the information provided by Erudus One.

We do not accept liability for any inaccuracies or incorrect information contained on this site. Please visit <http://www.erudus.com/terms-and-conditions> for full terms and conditions.

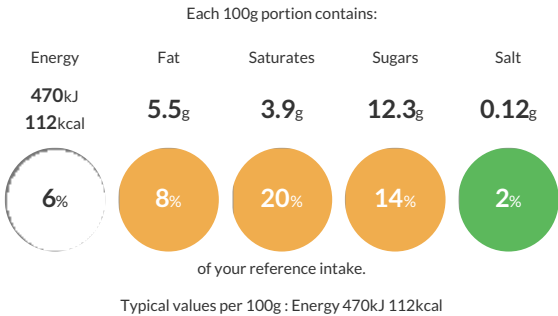
Double Chocolate Chip : 4 x 5 litre With Flavour

Short Product Name:
Double Chocolate Chip Ice Cream

Double Chocolate Chip Ice Cream - Rich chocolate ice cream with chunky milk chocolate chips.

Traded Unit GTIN:  Internal GTIN: Supplier:  Suppliers Product Code: 

Reference Intake



Nutritional Information

Typical Values	Per 100g
Energy	470kJ 112kCal
Carbohydrates	13.9g
of which sugars	12.3g
Fat	5.5g
of which saturates	3.9g
Fibre	0.4g
Protein	1.8g
Salt	0.12g

Allergy Information

Key:  Contains  May Contain


Does Not Contain Cereal/Gluten


Contains Milk


Does Not Contain Eggs


Does Not Contain Peanuts


May Contain Nuts


Does Not Contain Crustaceans


Does Not Contain Mustard


Does Not Contain Fish


Does Not Contain Lupin


Does Not Contain Sesame


Does Not Contain Celery


Contains Soya


Does Not Contain Molluscs


Does Not Contain Sulphur Dioxide

Dietary Information

Key:  Suitable for


Suitable for Vegetarian


May not be suitable for Vegan


May not be suitable for Kosher


May not be suitable for Halal


NO DATA for Coeliac

Allergen Statement
This product has been produced in a factory that uses nut ingredients.

Ingredients

Whole **MILK**, Sugar, Double Cream (**MILK**), Chocolate Chips (8.6%)(Sugar, Cocoa Butter, Skimmed **MILK** Powder, Cocoa Mass, Whole **MILK** Powder, Whey Powder (**MILK**), Anhydrous **MILK** Fat, Emulsifier: **SOYA** Lecithin, Natural Vanilla Flavouring), Glucose Syrup, Cocoa Powder, Skimmed **MILK** Powder, Natural Chocolate Flavouring (Natural Flavourings), Emulsifier: Mono- and Diglycerides of Fatty Acids, Stabilisers (Guar Gum, Carrageenan, Locust Bean Gum), Cocoa Mass.