

Supplier's Product Code :  
Product Added :  
Last Updated by Supplier :  
erudus id :

7103  
23 March 2010  
03 January 2024  
7be2b37cc9cd4e76a39cbac03eea0d0e



The information on the [Erudus System](#) has been supplied by the manufacturers of the products and, whilst the owners of the Erudus System take steps to ensure the information is regularly updated, they give no warranty and no guarantee that the information is accurate. Product information and ingredients may change, please always read product labels carefully in addition to using the information provided by Erudus One.

We do not accept liability for any inaccuracies or incorrect information contained on this site. Please visit <http://www.erudus.com/terms-and-conditions> for full terms and conditions.

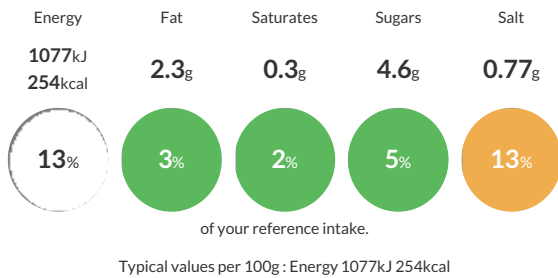
## Large Grill Marked Panini (P/B)

A pre sliced white panini baguette approx. 280mm in length supplied frozen with Grill Marks applied to the top surface. Product is supplied frozen.

Traded Unit GTIN: **05037173101673** Internal GTIN: Supplier: **Lantmannen Unibake** Suppliers Product Code: **7103**

### Reference Intake

Each 100g portion contains:



### Nutritional Information

Typical Values	Per 100g
Energy	1077kJ 254kCal
Carbohydrates	49g
of which sugars	4.6g
Fat	2.3g
of which saturates	0.3g
Fibre	2.4g
Protein	8.2g
Salt	0.77g

### Allergy Information

Key: **Contains** **May Contain**



#### Allergen Statement

For allergens, including cereals containing gluten, see ingredients in **CAPITALS**.  
May also contain traces of sesame seeds.

### Ingredients

**WHEAT** Flour (with Calcium, Iron, Niacin, Thiamin), Water, Yeast, Extra Virgin Olive Oil, Salt, Flour Treatment Agent (E300).

### Dietary Information

Key: **Suitable for**

