

Supplier's Product Code :
Product Added :
Last Updated by Supplier :
erudus id :

011809P
26 May 2026
27 May 2026
7c10e3d370f9423293d4d7f030a1eb24



The information on the **Erudus System** has been supplied by the manufacturers of the products and, whilst the owners of the Erudus System take steps to ensure the information is regularly updated, they give no warranty and no guarantee that the information is accurate. Product information and ingredients may change, please always read product labels carefully in addition to using the information provided by Erudus One.

We do not accept liability for any inaccuracies or incorrect information contained on this site. Please visit <http://www.erudus.com/terms-and-conditions> for full terms and conditions.

Purple Pineapple Tuna Mayonnaise and Sweetcorn 1kg

Short Product Name:

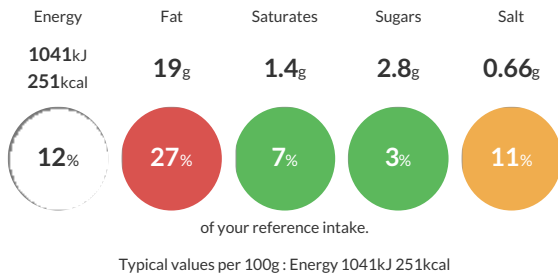
Tuna Mayonnaise and Sweetcorn

Tuna chunks and sweetcorn in a free range real mayonnaise

Traded Unit GTIN: Internal GTIN: Supplier: **Kff Ltd** Suppliers Product Code: **011809P**

Reference Intake

Each 100g portion contains:



Nutritional Information

| Typical Values | Per 100g |
|--------------------|-------------------|
| Energy | 1041kJ 251kCal |
| Carbohydrates | 5.6g |
| of which sugars | 2.8g |
| Fat | 19g |
| of which saturates | 1.4g |
| Fibre | 0.5g |
| Protein | 14g |
| Salt | 0.66g |

Allergy Information

Key: **Contains** **May Contain**



Dietary Information

Key: **Suitable for**



Ingredients

Tuna (55%) [Skipjack Tuna (Fish), Water, Salt], Mayonnaise (30%) [Rapeseed Oil, Water, Sugar, Modified Maize Starch, Free Range Egg Yolk Powder (0.8%), Stabiliser (Xanthan Gum), Salt, Preservatives (Acetic Acid, Potassium Sorbate), Colour (Lutein)], Sweetcorn (15%) [Sweet Corn, Water, Salt, Citric Acid]

ALLERGY ADVICE: For allergens, see ingredients in Bold