

The information on the [Erudus System](#) has been supplied by the manufacturers of the products and, whilst the owners of the Erudus System take steps to ensure the information is regularly updated, they give no warranty and no guarantee that the information is accurate. Product information and ingredients may change, please always read product labels carefully in addition to using the information provided by Erudus One.

We do not accept liability for any inaccuracies or incorrect information contained on this site. Please visit <http://www.erudus.com/terms-and-conditions> for full terms and conditions.

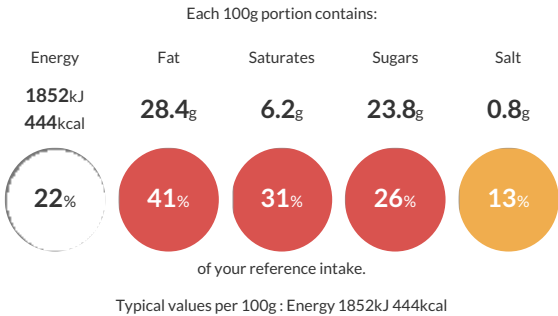
## 1342 - Individual Chocolate Fondant Pudding (12)

Short Product Name:  
Chocolate Fondant Pudding

A traditional moist chocolate sponge pudding, centred with chocolate fondant sauce.

Traded Unit GTIN: **5060622441693** Internal GTIN: Supplier: **Eatons Patisserie** Suppliers Product Code: **1342 187657**

### Reference Intake



### Nutritional Information

Typical Values	Per 100g
Energy	1852kJ 444kCal
Carbohydrates	40g
of which sugars	23.8g
Fat	28.4g
of which saturates	6.2g
Fibre	2.1g
Protein	5.8g
Salt	0.8g

### Allergy Information

Key: **Contains** **May Contain**

  
Contains Cereal/Gluten

  
Contains Milk

  
Contains Eggs

  
Does Not Contain Peanuts

  
May Contain Nuts

  
Does Not Contain Crustaceans

  
Does Not Contain Mustard

  
Does Not Contain Fish

  
Does Not Contain Lupin

  
Does Not Contain Sesame

  
Does Not Contain Celery

  
Contains Soya

  
Does Not Contain Molluscs

  
Does Not Contain Sulphur Dioxide

### Dietary Information

Key: **Suitable for**

  
Suitable for Vegetarian

  
May not be suitable for Vegan

  
May not be suitable for Kosher

  
May not be suitable for Halal

  
NO DATA for Coeliac

### Ingredients

Chocolate Muffin Base (45%) [Sugar, **WHEAT** Flour (With Calcium, Iron, Niacin, Thiamin), Whole **EGG** Powder, Fat Reduced Cocoa Powder (4%), Modified Starch (Maize), Raising Agents (Disodium Diphosphate, Potassium Bicarbonate), Emulsifiers (E477, E481), Whey Solids (**MILK**), Salt, Vegetable Oils (Palm, Rapeseed), Stabiliser (Xanthan Gum), Flavouring], Rapeseed Oil, Water, Dark Chocolate (9%) [Cocoa Mass, Sugar, Cocoa Butter, Emulsifier (**SOYA** Lecithin), Natural Vanilla Flavouring], Cream (**MILK**).