

The information on the [Erudus System](#) has been supplied by the manufacturers of the products and, whilst the owners of the Erudus System take steps to ensure the information is regularly updated, they give no warranty and no guarantee that the information is accurate. Product information and ingredients may change, please always read product labels carefully in addition to using the information provided by Erudus One.

We do not accept liability for any inaccuracies or incorrect information contained on this site. Please visit <http://www.erudus.com/terms-and-conditions> for full terms and conditions.

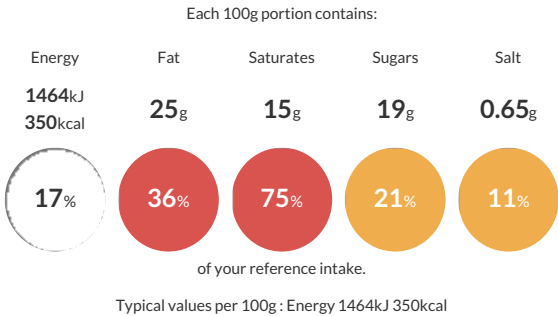
Raspberry White Chocolate Cheese Brulee

Short Product Name:
Raspberry White Chocolate Cheese Brulee

A silken smooth, yet refreshingly light white chocolate cheese a-swirl with vibrant red raspberry. Hand-fired and glazed.

Traded Unit GTIN: 10749017012558 Internal GTIN: 0749017012551 Supplier : Sweet Street Desserts Suppliers Product Code : 1255

Reference Intake



Nutritional Information

Typical Values	Per 100g
Energy	1464kJ 350kCal
Carbohydrates	28g
of which sugars	19g
Fat	25g
of which saturates	15g
Fibre	1g
Protein	5g
Salt	0.65g

Allergy Information

Key: Contains May Contain


Contains Cereal/Gluten


Contains Milk


Contains Eggs


May Contain Peanuts


May Contain Nuts


Does Not Contain Crustaceans


Does Not Contain Mustard


Does Not Contain Fish


Does Not Contain Lupin


Does Not Contain Sesame


Does Not Contain Celery



Contains Soya



Does Not Contain Molluscs



Does Not Contain Sulphur Dioxide


Dietary Information


Key: Suitable for


Suitable for Vegetarian


May not be suitable for Vegan


Suitable for Kosher


Suitable for Halal


May not be suitable for Coeliac

Allergen Statement
or allergens, see ingredients that are capitalized.
May contain traces of **PEANUTS, MACADAMIA NUTS, PECAN NUTS, WALNUTS, ALMOND NUTS.**

Ingredients

CREAM CHEESE (38.26%) [pasteurized **MILK** and **CREAM**, salt, cheese cultures], **EGGS**, white confectionary [sugar, palm kernel oil, palm oil, **WHEY (MILK)**, nonfat **MILK**, emulsifier (E322 (**SOY**)), vanilla], margarine [**SOYBEAN** oil, palm oil, water, salt, emulsifier (E471), nonfat dry **MILK**, emulsifier (E322 (sunflower)), natural flavour, vitamin A palmitate, colour (E160a)], sugar, **WHEAT** flour, sour **CREAM** [cultured **CREAM (MILK)**, nonfat **MILK**, enzymes], **GRAHAM** crumbs [**WHEAT** flour, **GRAHAM** flour, sugar, palm oil, brown sugar, honey, salt, baking soda, natural flavour], raspberry jam (2.57%) [sugar, raspberry puree, raspberry juice concentrate, lemon juice concentrate, emulsifier (E440)], **CREAM (MILK)**, raspberries (2.02%), **OATS**, water, brown sugar, neutral glaze [glucose, water, fructose, invert sugar, sugar, emulsifier (E440), acidity regulator (E330), stabilizer (E415), emulsifier (E450iii)], white chocolate [sugar, cocoa butter, whole **MILK** powder, nonfat dry **MILK**, **MILKFAT**, emulsifier (E322 (**SOY**)), natural vanilla extract], thickener (E1442), glucose, lemon juice concentrate, raspberry juice concentrate (0.15%), salt, natural Madagascar vanilla flavour, emulsifier (E440).