

Supplier's Product Code :
Product Added :
Last Updated by Supplier :
erudus id :

20304376
08 April 2025
08 April 2025
7ccec9e7d9534645b8a335fbe9c3d51e



The information on the **Erudus System** has been supplied by the manufacturers of the products and, whilst the owners of the Erudus System take steps to ensure the information is regularly updated, they give no warranty and no guarantee that the information is accurate. Product information and ingredients may change, please always read product labels carefully in addition to using the information provided by Erudus One.

We do not accept liability for any inaccuracies or incorrect information contained on this site. Please visit <http://www.erudus.com/terms-and-conditions> for full terms and conditions.

Kerrymaid Regular Custard 12 x 1kg

Short Product Name:

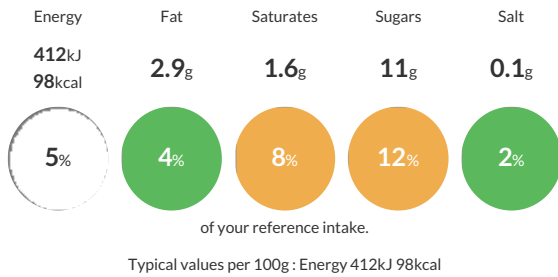
20304376-KERRYMAID REG CUST 12X1KG

Smooth and consistent with a sweet, creamy, subtle vanilla flavour leaving an overall sweet after taste.

Traded Unit GTIN: **000005000401001335** Internal GTIN: **5000401001328** Supplier: **Kerry Ingredients UK Limited** Suppliers Product Code: **20304376**

Reference Intake

Each 100g portion contains:



Nutritional Information

Typical Values	Per 100g
Energy	412kJ 98kCal
Carbohydrates	16g
of which sugars	11g
Fat	2.9g
of which saturates	1.6g
Fibre	<0.5g
Protein	2.2g
Salt	0.1g

Allergy Information

Key: **Contains** **May Contain**



Gluten Claim

Gluten content is less than 20ppm.

Allergen Statement

For allergens please see ingredients in **CAPITALS**

Ingredients

Reconstituted Skimmed **MILK**, Reconstituted Buttermilk (**MILK**), Water, Sugar, Modified Maize Starch, Palm Oil, **MILK** Proteins, Natural Flavouring, Colours (Beta Carotene, Paprika Extract).

Dietary Information

Key: **Suitable for**

