

Supplier's Product Code :
Product Added :
Last Updated by Supplier :
erudus id :

012120P
28 May 2026
29 May 2026
7d9a6806dd7142408974efb079652247



The information on the **Erudus System** has been supplied by the manufacturers of the products and, whilst the owners of the Erudus System take steps to ensure the information is regularly updated, they give no warranty and no guarantee that the information is accurate. Product information and ingredients may change, please always read product labels carefully in addition to using the information provided by Erudus One.

We do not accept liability for any inaccuracies or incorrect information contained on this site. Please visit <http://www.erudus.com/terms-and-conditions> for full terms and conditions.

Purple Pineapple Low Fat Sliced Mexican Chicken 1kg

Short Product Name:

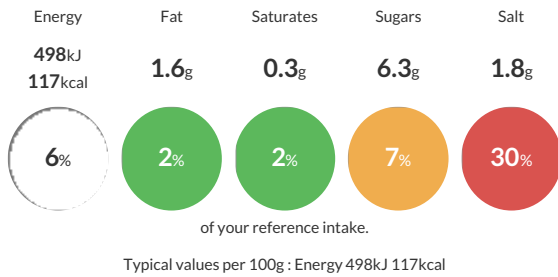
Low Fat Sliced Mexican Chicken

Sliced Chicken coated in a spicy tomato, herb and chilli sauce

Traded Unit GTIN: Internal GTIN: Supplier: Suppliers Product Code:

Reference Intake

Each 100g portion contains:



Nutritional Information

Typical Values	Per 100g
Energy	498kJ 117kCal
Carbohydrates	9.1g
of which sugars	6.3g
Fat	1.6g
of which saturates	0.3g
Fibre	1.1g
Protein	16g
Salt	1.8g

Allergy Information

Key: Contains May Contain



Dietary Information

Key: Suitable for



Ingredients

Chicken (60%) [Chicken Breast, Rice Starch, Salt, Dextrose, D Xylose, Maltodextrin, Stabilisers (Sodium Bicarbonate, Sodium Citrates)], Mexican Marinade (28%) [Water, Sugar, Spirit Vinegar, Tomato Paste, Dehydrated Vegetables Red Pepper, Onion, Garlic, Thickener Modified Starch (E1422), Vegetable Oil Rapeseed, Salt, Spice Cayenne, Cumin, Cayenne, Paprika, Nutmeg, Allspice, Malt (Barley) Extract (Barley), Oregano, Lemon Juice Concentrate], Diced Red Peppers (10%), Cajun Seasoning (1%) [Salt, Chilli (21%), Black Pepper (5%), Garlic (5%), Thyme (5%), Oregano (5%), Rosemary (5%), Onion, Paprika, Paprika Extract, Silicon Dioxide, Sage, Pimento], Chillies (1%)

ALLERGY ADVICE: For allergens, see ingredients in