

The information on the [Erudus System](#) has been supplied by the manufacturers of the products and, whilst the owners of the Erudus System take steps to ensure the information is regularly updated, they give no warranty and no guarantee that the information is accurate. Product information and ingredients may change, please always read product labels carefully in addition to using the information provided by Erudus One.

We do not accept liability for any inaccuracies or incorrect information contained on this site. Please visit <http://www.erudus.com/terms-and-conditions> for full terms and conditions.

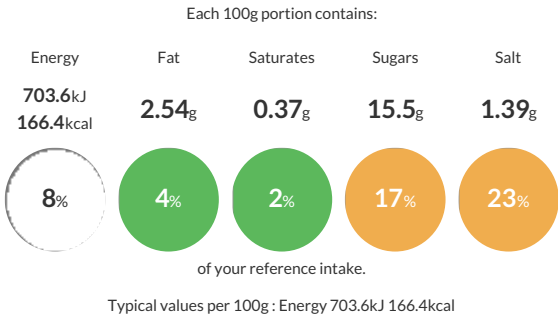
Purple Pineapple Meat-Free Sweet Chilli Balls 1kg

Short Product Name:
Meat-Free Sweet Chilli Balls

Meatless Meatballs in a Sweet Chilli Sauce

Traded Unit GTIN: Internal GTIN: Supplier: **Kff Ltd** Suppliers Product Code: **012323P**

Reference Intake



Nutritional Information


Typical Values	Per 100g
Energy	703.6kJ 166.4kCal
Carbohydrates	23.4g
of which sugars	15.5g
Fat	2.54g
of which saturates	0.37g
Fibre	-g
Protein	12.25g
Salt	1.39g

Allergy Information


Key: **Contains** **May Contain**


Contains Cereal/Gluten


Does Not Contain Milk



Does Not Contain Eggs


Does Not Contain Peanuts



Does Not Contain Nuts


Does Not Contain Crustaceans



Does Not Contain Mustard



Does Not Contain Fish



Does Not Contain Lupin


Does Not Contain Sesame


Does Not Contain Celery


Does Not Contain Soya


Does Not Contain Molluscs


Contains Sulphur Dioxide

Dietary Information

Key: **Suitable for**


Suitable for Vegetarian


Suitable for Vegan


May not be suitable for Kosher


May not be suitable for Halal


NO DATA for Coeliac

Ingredients

Meatless meatballs 40% (**WHEAT (GLUTEN)** shreds, water, starch, firming agent, calcium sulphate, preservative: sodium meta bisulphite (**SULPHITES**), mushroom, pea protein, rapeseed oil, onion, potato flake, spices (mace, coriander, black pepper), dextrose, salt, garlic powder, onion powder, yeast extract; Chilli Sauce 30% (water, sugar, spirit vinegar, tomato paste, golden syrup, thickener (E1422 modified starch), salt, red pepper flake, onion kibbled, spice (cayenne, ginger), garlic, herb (oregano), paprika (E160c); Royal Crown Kidney Beans 20% (red kidney beans, water); Thai Sweet Chilli Sauce 10% (glucose-fructose syrup, sugar, water, spirit vinegar, modified starch, garlic puree (water, dried garlic, acidity regulator (citric acid)), salt, dried garlic, birds eye chillies, dried red pepper, crushed chilli, preservative: potassium sorbate)