

Supplier's Product Code :
 Product Added :
 Last Updated by Supplier :
 erudus id :

46230
 29 May 2026
 29 May 2026
 7e0b0083acd14751845898265bb32cac



The information on the **Erudus System** has been supplied by the manufacturers of the products and, whilst the owners of the Erudus System take steps to ensure the information is regularly updated, they give no warranty and no guarantee that the information is accurate. Product information and ingredients may change, please always read product labels carefully in addition to using the information provided by Erudus One.

We do not accept liability for any inaccuracies or incorrect information contained on this site. Please visit <http://www.erudus.com/terms-and-conditions> for full terms and conditions.

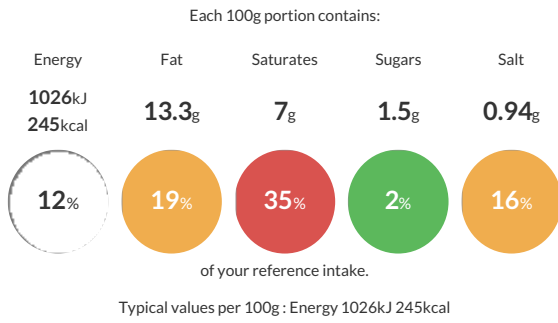
20 UCF Lamb & Mint Pasty

Short Product Name:
 Lamb and Mint Pasty

Minced lamb mixed with fresh potato, onion, and swede, flavoured with mint and encased in a pre-glazed, hand crimped pastry case

Traded Unit GTIN: **05023281462300** Internal GTIN: Supplier: **Proper Cornish Food Company** Suppliers Product Code: **46230**

Reference Intake



Nutritional Information

Typical Values	Per 100g
Energy	1026kJ 245kCal
Carbohydrates	26.9g
of which sugars	1.5g
Fat	13.3g
of which saturates	7g
Fibre	1.7g
Protein	5.4g
Salt	0.94g

Allergy Information

Key: **Contains** **May Contain**

Contains Cereal/Gluten	Contains Milk	Does Not Contain Eggs	Does Not Contain Peanuts	Does Not Contain Nuts	Does Not Contain Crustaceans	Does Not Contain Mustard
Does Not Contain Fish	Does Not Contain Lupin	Does Not Contain Sesame	Does Not Contain Celery	Does Not Contain Soya	Does Not Contain Molluscs	Does Not Contain Sulphur Dioxide

Dietary Information

Key: **Suitable for**

May not be suitable for Vegetarian	May not be suitable for Vegan	May not be suitable for Kosher	May not be suitable for Halal	NO DATA for Coeliac
------------------------------------	-------------------------------	--------------------------------	-------------------------------	---------------------

Ingredients

WHEAT Flour (WHEAT Flour, Calcium, Iron, Niacin, Folic Acid, Thiamin), Potato, Lamb (13%), Water, Vegetable Margarine (Vegetable Oils And Fats [Palm], Water, Salt, Lemon Juice), Swede, Onion, White Shortening (Vegetable Oils And Fats [Palm, Rapeseed], Water, Salt, Lemon Juice), Mint Sauce (1%) (Water, Reconstituted Dried Mint, Sugar, Acidity Regulator (Acetic Acid), Salt, Modified Maize Starch, Stabilisers (Guer Gum, Xanthan Gum), Colour (Copper Chlorophyllin), Flavouring), Salt, Cornflour, Glaze (MILK Protein, Dextrose, Vegetable Oil), Black Pepper, Dried Mint