

The information on the [Erudus System](#) has been supplied by the manufacturers of the products and, whilst the owners of the Erudus System take steps to ensure the information is regularly updated, they give no warranty and no guarantee that the information is accurate. Product information and ingredients may change, please always read product labels carefully in addition to using the information provided by Erudus One.

We do not accept liability for any inaccuracies or incorrect information contained on this site. Please visit <http://www.erudus.com/terms-and-conditions> for full terms and conditions.

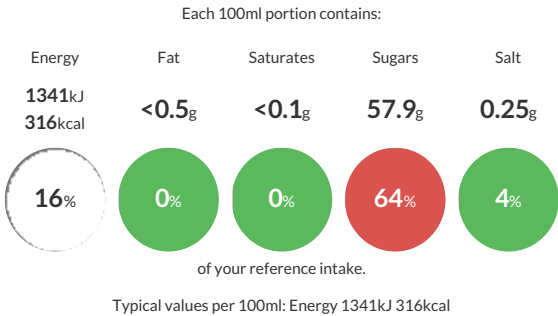
Simply Strawberry Flavour Syrup 1L

Short Product Name:
Simply Strawberry Flavour Syrup 1L

Strawberry Flavour Syrup – a flavoured sugar syrup for adding flavour to beverages, including coffee etc.

Traded Unit GTIN: **5060134521463** Internal GTIN: **5060134521456** Supplier : **IBC Simply** Suppliers Product Code : **IBC1LTRSTR**

Reference Intake



Nutritional Information

Typical Values	Per 100ml
Energy	1341kJ 316kCal
Carbohydrates	76.9g
of which sugars	57.9g
Fat	<0.5g
of which saturates	<0.1g
Fibre	-g
Protein	<0.5g
Salt	0.25g

Allergy Information

Key: **Contains** **May Contain**


Does Not Contain Cereal/Gluten


Does Not Contain Milk


Does Not Contain Eggs


Does Not Contain Peanuts


Does Not Contain Nuts


Does Not Contain Crustaceans


Does Not Contain Mustard


Does Not Contain Fish


Does Not Contain Lupin


Does Not Contain Sesame


Does Not Contain Celery


Does Not Contain Soya


Does Not Contain Molluscs


Does Not Contain Sulphur Dioxide

Allergen Statement
None

Ingredients

Sugar, Water, Glycerine, Natural flavouring, Acid: Citric acid, Colour: E163, Salt, Preservative: E202.

Dietary Information

Key: **Suitable for**


Suitable for Vegetarian


Suitable for Vegan


May not be suitable for Kosher


Suitable for Halal


NO DATA for Coeliac