

The information on the [Erudus System](#) has been supplied by the manufacturers of the products and, whilst the owners of the Erudus System take steps to ensure the information is regularly updated, they give no warranty and no guarantee that the information is accurate. Product information and ingredients may change, please always read product labels carefully in addition to using the information provided by Erudus One.

We do not accept liability for any inaccuracies or incorrect information contained on this site. Please visit <http://www.erudus.com/terms-and-conditions> for full terms and conditions.

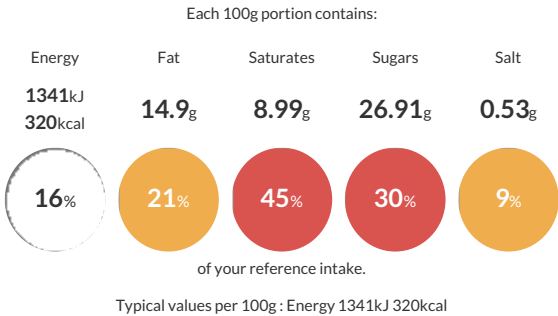
Black Forest Gateau, 900g; whole

Short Product Name:
Black Forest Gateau

Two layered chocolate sponge with dairy cream & cherry flavoured filling, decorated with chocolate flakes & dairy cream rosettes; whole.

Traded Unit GTIN: 05024333115014 Internal GTIN: Supplier : Mademoiselle Desserts (Taunton) Suppliers Product Code : F00131

Reference Intake



Nutritional Information

Typical Values	Per 100g
Energy	1341kJ 320kCal
Carbohydrates	41.53g
of which sugars	26.91g
Fat	14.9g
of which saturates	8.99g
Fibre	1.55g
Protein	4.18g
Salt	0.53g

Allergy Information

Key: Contains May Contain

Contains Cereal/Gluten

Contains Milk

Contains Eggs

May Contain Peanuts

May Contain Nuts

Does Not Contain Crustaceans

Does Not Contain Mustard

Does Not Contain Fish

Does Not Contain Lupin

Does Not Contain Sesame

Does Not Contain Celery

Contains Soya

Does Not Contain Molluscs

Does Not Contain Sulphur Dioxide

Dietary Information

Key: Suitable for

Suitable for Vegetarian

May not be suitable for Vegan

May not be suitable for Kosher

May not be suitable for Halal

May not be suitable for Coeliac

Ingredients

Cream (MILK) (26%), Sugar, **WHEAT** Flour (with Calcium, Iron, Niacin, Thiamin), Water, **EGG**, Chocolate (5%) [Sugar, Cocoa Mass, Cocoa Powder, Emulsifier (**SOYA** Lecithin)], Fat Reduced Cocoa Powder (3%), Humectant (Glycerol), Glucose, Dextrose, Margarine [Palm Oil, Rapeseed Oil, Water, Emulsifier (Mono- and Di-Glycerides of Fatty Acids)], Palm Oil, Whey Powder (MILK), Concentrated Cherry Juice, Raising Agents (Sodium Bicarbonate, Disodium Diphosphate), Modified Maize Starch, Cherries, Emulsifiers (Mono- and Di-Glycerides of Fatty Acids, Polyglycerol Esters of Fatty Acids), **WHEAT** Flour, **BUTTERMILK** Powder, Stabilisers (Carrageenan, Xanthan Gum), Acidity Regulator (Citric Acid), Colours (Anthocyanins, Curcumin), Flavouring, Emulsifier (**SOYA** Lecithin), Preservative (Potassium Sorbate).