

Supplier's Product Code :  
 Product Added :  
 Last Updated by Supplier :  
 erudus id :

3045  
 09 July 2025  
 09 July 2025  
 7fd8c89ba895474c9e80111e8a9883b7



The information on the **Erudus System** has been supplied by the manufacturers of the products and, whilst the owners of the Erudus System take steps to ensure the information is regularly updated, they give no warranty and no guarantee that the information is accurate. Product information and ingredients may change, please always read product labels carefully in addition to using the information provided by Erudus One.

We do not accept liability for any inaccuracies or incorrect information contained on this site. Please visit <http://www.erudus.com/terms-and-conditions> for full terms and conditions.

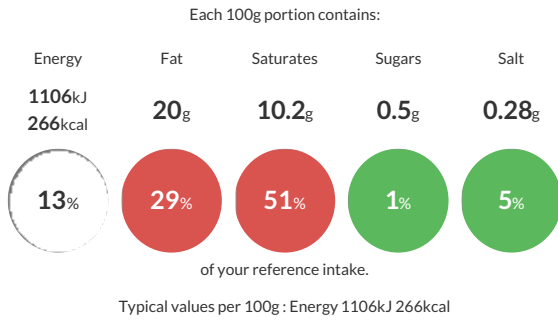
## British Lamb Mince

Short Product Name:  
 Red Tractor Assured 85VL Mince

Prepared from any combination of shoulder or leg cuts mixed with lamb skirts that will provide a satisfactory end product of 85%VL mince, made of 30% lamb skirts and 70% boneless shoulder or 85%VL trim. Lamb trims and skirts are to be minced to a final diameter 3mm. 1kg vacuum packed pouches.

Traded Unit GTIN: **5032990003384** Internal GTIN: Supplier : **Pilgrim's UK Lamb** Suppliers Product Code : **3045**

### Reference Intake



### Nutritional Information

Typical Values	Per 100g
Energy	1106kJ 266kCal
Carbohydrates	0.5g
of which sugars	0.5g
Fat	20g
of which saturates	10.2g
Fibre	0.5g
Protein	21.4g
Salt	0.28g

### Allergy Information

Key: **Contains** **May Contain**

Does Not Contain Cereal/Gluten	Does Not Contain Milk	Does Not Contain Eggs	Does Not Contain Peanuts	Does Not Contain Nuts	Does Not Contain Crustaceans	Does Not Contain Mustard
Does Not Contain Fish	Does Not Contain Lupin	Does Not Contain Sesame	Does Not Contain Celery	Does Not Contain Soya	Does Not Contain Molluscs	Does Not Contain Sulphur Dioxide

**Gluten Claim**  
 Gluten content is less than 20ppm.

**Allergen Statement**  
 n/a

### Ingredients

100% lamb

### Dietary Information

Key: **Suitable for**

NO DATA for Vegetarian	NO DATA for Vegan	May not be suitable for Kosher	Suitable for Halal	Suitable for Coeliac
------------------------	-------------------	--------------------------------	--------------------	----------------------