

The information on the [Erudus System](#) has been supplied by the manufacturers of the products and, whilst the owners of the Erudus System take steps to ensure the information is regularly updated, they give no warranty and no guarantee that the information is accurate. Product information and ingredients may change, please always read product labels carefully in addition to using the information provided by Erudus One.

We do not accept liability for any inaccuracies or incorrect information contained on this site. Please visit <http://www.erudus.com/terms-and-conditions> for full terms and conditions.

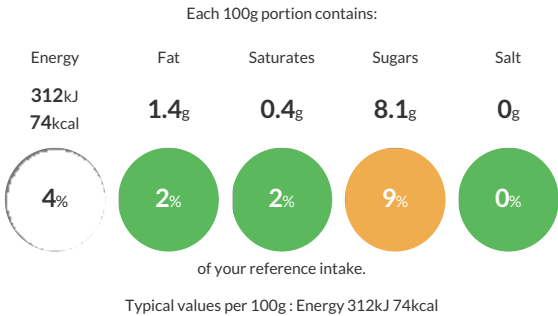
Darta UK Sweetcorn 10 x 1 kg

Short Product Name:
Sweetcorn

Darta UK Sweetcorn

Traded Unit GTIN: 5413408012158 Internal GTIN: 5413408111424 Supplier : D'Arta S.A. Suppliers Product Code: 21110191 - S21110010911

Reference Intake



Nutritional Information

Typical Values	Per 100g
Energy	312kJ 74kCal
Carbohydrates	11.6g
of which sugars	8.1g
Fat	1.4g
of which saturates	0.4g
Fibre	2.5g
Protein	2.5g
Salt	0g

Allergy Information

Key: Contains May Contain


Does Not Contain Cereal/Gluten


Does Not Contain Milk


Does Not Contain Eggs


Does Not Contain Peanuts


Does Not Contain Nuts


Does Not Contain Crustaceans


Does Not Contain Mustard


Does Not Contain Fish


Does Not Contain Lupin


Does Not Contain Sesame


Does Not Contain Celery


Does Not Contain Soya


Does Not Contain Molluscs


Does Not Contain Sulphur Dioxide

Dietary Information

Key: Suitable for


Suitable for Vegetarian


Suitable for Vegan


May not be suitable for Kosher


May not be suitable for Halal


NO DATA for Coeliac

Ingredients

Sweetcorn (100%)