

Supplier's Product Code :  
 Product Added :  
 Last Updated by Supplier :  
 erudus id :

013325P  
 26 May 2026  
 27 May 2026  
 8004f816e9174bfba164c434ad4de89



The information on the **Erudus System** has been supplied by the manufacturers of the products and, whilst the owners of the Erudus System take steps to ensure the information is regularly updated, they give no warranty and no guarantee that the information is accurate. Product information and ingredients may change, please always read product labels carefully in addition to using the information provided by Erudus One.

We do not accept liability for any inaccuracies or incorrect information contained on this site. Please visit <http://www.erudus.com/terms-and-conditions> for full terms and conditions.

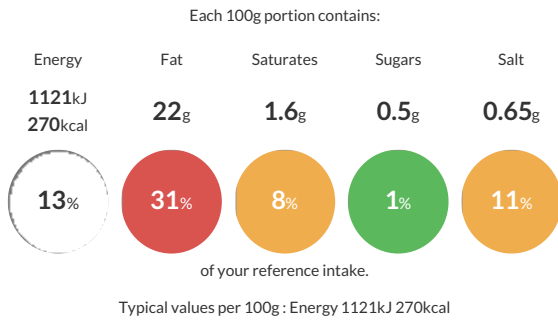
## Purple Pineapple Tuna Mayonnaise 2.5kg

Short Product Name:  
 Tuna Mayonnaise

Tuna chunks bound in a free range real mayonnaise

Traded Unit GTIN: Internal GTIN: Supplier: Suppliers Product Code:

### Reference Intake



### Nutritional Information

Typical Values	Per 100g
Energy	1121kJ 270kCal
Carbohydrates	1.8g
of which sugars	0.5g
Fat	22g
of which saturates	1.6g
Fibre	0g
Protein	16g
Salt	0.65g

### Allergy Information

Key:

Does Not Contain Cereal/Gluten	Does Not Contain Milk	Contains Eggs	Does Not Contain Peanuts	Does Not Contain Nuts	Does Not Contain Crustaceans	Does Not Contain Mustard
Contains Fish	Does Not Contain Lupin	Does Not Contain Sesame	Does Not Contain Celery	Does Not Contain Soya	Does Not Contain Molluscs	Does Not Contain Sulphur Dioxide

### Dietary Information

Key:

May not be suitable for Vegetarian	May not be suitable for Vegan	May not be suitable for Kosher	May not be suitable for Halal	NO DATA for Coeliac
------------------------------------	-------------------------------	--------------------------------	-------------------------------	---------------------

### Ingredients

Tuna (65%) [Skipjack Tuna (<b>Fish</b>), Water, Salt], Mayonnaise (35%) [Rapeseed Oil, Water, Sugar, Modified Maize Starch, Free Range <b>Egg</b> Yolk Powder (0.8%), Stabiliser (Xanthan Gum), Salt, Preservatives (Acetic Acid, Potassium Sorbate), Colour (Lutein)]

**ALLERGY ADVICE:** For allergens, see ingredients in Bold