

The information on the [Erudus System](#) has been supplied by the manufacturers of the products and, whilst the owners of the Erudus System take steps to ensure the information is regularly updated, they give no warranty and no guarantee that the information is accurate. Product information and ingredients may change, please always read product labels carefully in addition to using the information provided by Erudus One.

We do not accept liability for any inaccuracies or incorrect information contained on this site. Please visit <http://www.erudus.com/terms-and-conditions> for full terms and conditions.

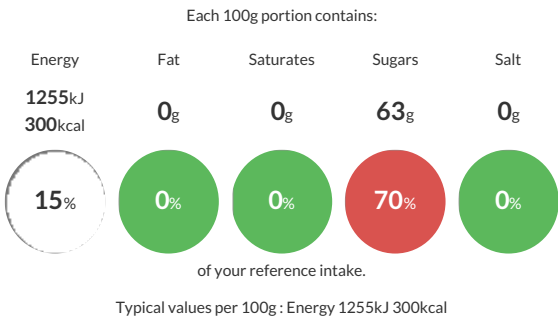
o.t.t® Maple Flavour Syrup dessert topping 6 x 500g

Short Product Name:
o.t.t® Maple Flavour Syrup dessert topping 6 x 500g

Ready-to-use maple flavour sauce made with a blend of sugar and maple flavouring.

Traded Unit GTIN: 05017506007193 Internal GTIN: 5017506131195 Supplier : Macphie Ltd Suppliers Product Code: 10008781

Reference Intake



Nutritional Information

Typical Values	Per 100g
Energy	1255kJ 300kCal
Carbohydrates	75g
of which sugars	63g
Fat	0g
of which saturates	0g
Fibre	0g
Protein	0g
Salt	0g

Allergy Information

Key: Contains May Contain



Does Not Contain Cereal/Gluten



Does Not Contain Milk



Does Not Contain Eggs



Does Not Contain Peanuts



Does Not Contain Nuts



Does Not Contain Crustaceans



Does Not Contain Mustard



Does Not Contain Fish



Does Not Contain Lupin



Does Not Contain Sesame



Does Not Contain Celery



Does Not Contain Soya



Does Not Contain Molluscs



Does Not Contain Sulphur Dioxide

Dietary Information

Key: Suitable for



Suitable for Vegetarian



Suitable for Vegan



Suitable for Kosher



Suitable for Halal



NO DATA for Coeliac

Ingredients

Glucose Syrup, Sugar, Water, Flavouring, Colour (Plain caramel), Preservative (Potassium sorbate), Acidity Regulator (Citric acid).