

Supplier's Product Code :  
 Product Added :  
 Last Updated by Supplier :  
 erudus id :

10111  
 20 February 2025  
 24 April 2025  
 8384d42845f3416a94288c158813b914



The information on the Erudus System has been supplied by the manufacturers of the products and, whilst the owners of the Erudus System take steps to ensure the information is regularly updated, they give no warranty and no guarantee that the information is accurate. Product information and ingredients may change, please always read product labels carefully in addition to using the information provided by Erudus One.

We do not accept liability for any inaccuracies or incorrect information contained on this site. Please visit <http://www.erudus.com/terms-and-conditions> for full terms and conditions.

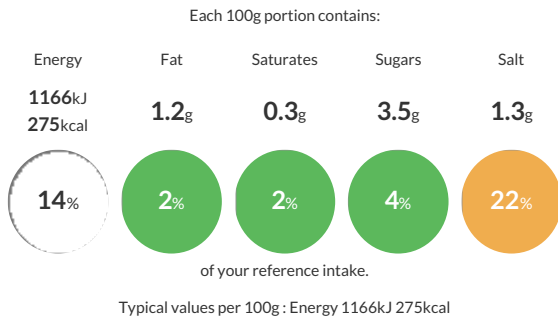
## 72 GREEK FLAT BREAD 120G

Short Product Name:  
 GREEK FLAT BREAD 120G

Flat bread

Traded Unit GTIN: **3516870101114** Internal GTIN: Supplier: **Planete Pain** Suppliers Product Code: **10111**

### Reference Intake



### Nutritional Information

Typical Values	Per 100g
Energy	1166kJ 275kCal
Carbohydrates	56.5g
of which sugars	3.5g
Fat	1.2g
of which saturates	0.3g
Fibre	-g
Protein	8.9g
Salt	1.3g

### Allergy Information

Key: **Contains** **May Contain**

Contains Cereal/Gluten	May Contain Milk	Does Not Contain Eggs	Does Not Contain Peanuts	Does Not Contain Nuts	Does Not Contain Crustaceans	May Contain Mustard
Does Not Contain Fish	May Contain Lupin	May Contain Sesame	Does Not Contain Celery	May Contain Soya	Does Not Contain Molluscs	Does Not Contain Sulphur Dioxide

### Dietary Information

Key: **Suitable for**

Suitable for Vegetarian	May not be suitable for Vegan	May not be suitable for Kosher	May not be suitable for Halal	NO DATA for Coeliac
-------------------------	-------------------------------	--------------------------------	-------------------------------	---------------------

### Ingredients

WHEAT flour, water, sugar, yeast, salt, sunflower oil, flour treatment agents : ascorbic acid E300, L-Cysteine E920, preservative: sorbic acid E200, enzymes.