

Supplier's Product Code :  
Product Added :  
Last Updated by Supplier :  
erudus id :

MBSW250  
18 March 2026  
18 March 2026  
839e4014b15647d58feb18b4a33cba0f



The information on the Erudus System has been supplied by the manufacturers of the products and, whilst the owners of the Erudus System take steps to ensure the information is regularly updated, they give no warranty and no guarantee that the information is accurate. Product information and ingredients may change, please always read product labels carefully in addition to using the information provided by Erudus One.

We do not accept liability for any inaccuracies or incorrect information contained on this site. Please visit <http://www.erudus.com/terms-and-conditions> for full terms and conditions.

## Mushroom, Brie & Spinach Wellington

Short Product Name:

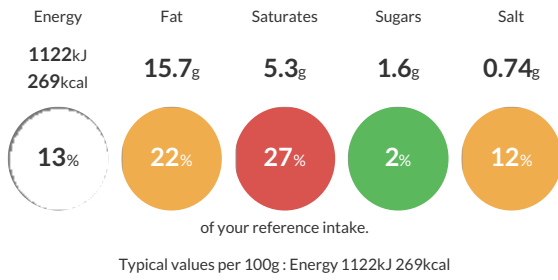
Mushroom, Brie & Spinach Wellington

A Creamy Mushroom, Brie & Spinach mix combined with diced root Vegetables, Cranberries and local Cider.

Traded Unit GTIN:  Internal GTIN:  Supplier: **Bell House Foods Limited** Suppliers Product Code: **MBSW250**

### Reference Intake

Each 100g portion contains:



### Nutritional Information

Typical Values	Per 100g
Energy	1122kJ 269kCal
Carbohydrates	26.4g
of which sugars	1.6g
Fat	15.7g
of which saturates	5.3g
Fibre	0.8g
Protein	4.5g
Salt	0.74g

### Allergy Information

Key: **Contains** **May Contain**



### Dietary Information

Key: **Suitable for**



### Ingredients

Ingredients: Filling: Mushroom (13%), Brie (MILK) (5%) Spinach (5%), Dried Cranberries Cider, CELERY, Carrots, Onion, Leek Cream (MILK), Maize Starch, MILK, Salt, Pepper Pastry: Wheat Flour WHEAT, Calcium Carbonate, Iron, Niacin, Thiamin, Vegetable Shortening (Palm & Rapeseed Oils) Margarine (Vegetable Oil, Water, Salt Emulsifier (Mono & Diglycerides of fatty acids) Preservatives (Potassium Sorbete, Citric Acid) Colour (Annatto Bixin (E160b(i)) & Curcumin) Flavourings), Water, Salt.