



The information on the [Erudus System](#) has been supplied by the manufacturers of the products and, whilst the owners of the Erudus System take steps to ensure the information is regularly updated, they give no warranty and no guarantee that the information is accurate. Product information and ingredients may change, please always read product labels carefully in addition to using the information provided by Erudus One.

We do not accept liability for any inaccuracies or incorrect information contained on this site. Please visit <http://www.erudus.com/terms-and-conditions> for full terms and conditions.

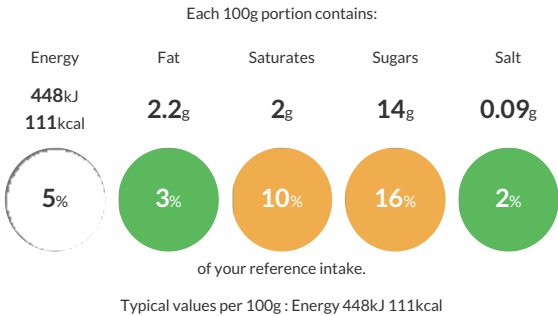
Wall's Haribo Push Up 85ml

Short Product Name:  
Haribo Push Up

Vanilla flavour ice cream with strawberry sauce (30%) and fruit flavour gummy bears (6.5%)

Traded Unit GTIN:  Internal GTIN: Supplier :  Suppliers Product Code : 

Reference Intake



Nutritional Information

Typical Values	Per 100g
Energy	448kJ 111kCal
Carbohydrates	20g
of which sugars	14g
Fat	2.2g
of which saturates	2g
Fibre	-g
Protein	1.3g
Salt	0.09g

Allergy Information

Key:  Contains  May Contain

  
Does Not Contain Cereal/Gluten

  
Contains Milk

  
Does Not Contain Eggs

  
May Contain Peanuts

  
May Contain Nuts

  
Does Not Contain Crustaceans

  
Does Not Contain Mustard

  
Does Not Contain Fish

  
Does Not Contain Lupin

  
Does Not Contain Sesame

  
Does Not Contain Celery

  
May Contain Soya

  
Does Not Contain Molluscs

  
Does Not Contain Sulphur Dioxide

Allergen Statement  
May contain soy, peanuts and nuts.

Ingredients

Ingredients: Reconstituted skimmed MILK (50%), strawberry puree (12%), glucose syrup, fruit flavour gummy bears (glucose syrup, sugar, gelatine, dextrose, fruit juice from concentrate (apple, strawberry, raspberry, orange, lemon, pineapple), acidity regulator (citric acid), fruit and plant concentrates (safflower, spirulina, apple, elderberry, orange, blackcurrant, kiwi, lemon, aronia, mango, passion fruit, grape), flavouring, elderberry extract, glazing agents (white and yellow beeswax, carnauba wax)), fructose, sugar, coconut oil, whey solids ( MILK), dextrose, emulsifier (mono and di-glycerides of fatty acids), stabilisers (locust bean gum, guar gum, carrageenan, sodium alginate), acidity regulator (citric acid), beetroot juice concentrate, flavourings.

Dietary Information

Key:  Suitable for

  
May not be suitable for Vegetarian

  
May not be suitable for Vegan

  
May not be suitable for Kosher

  
May not be suitable for Halal

  
May not be suitable for Coeliac