

Supplier's Product Code :
Product Added :
Last Updated by Supplier :
erudus id :

92410
17 July 2015
22 March 2022
83faaec4d02540c1a8cc684a7d0048cd



The information on the Erudus System has been supplied by the manufacturers of the products and, whilst the owners of the Erudus System take steps to ensure the information is regularly updated, they give no warranty and no guarantee that the information is accurate. Product information and ingredients may change, please always read product labels carefully in addition to using the information provided by Erudus One.

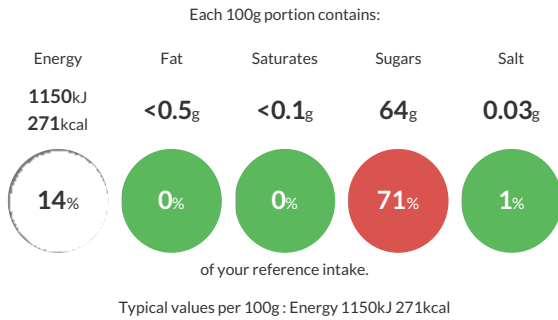
We do not accept liability for any inaccuracies or incorrect information contained on this site. Please visit <http://www.erudus.com/terms-and-conditions> for full terms and conditions.

Buckwud Maple Syrup 620g

CLEAR, MEDIUM AMBER COLOURED FREE FLOWING POURABLE MAPLE SYRUP WITH SMOOTH MOUTH FEEL. "SUITABLE FOR FOOD USE". Marketing text: Long, long ago the first people of the land that is now Canada discovered that when they pierced the bark of the maple tree a sticky sweet liquid trickled out. They tasted it. "Its Gud!". They thought. They called it sinzibuckwud meaning drawn from wood. We call ours Buckwud For a tasty twist drizzle over root vegetables, sausages, chicken & bacon. Or pour over pancakes, waffles and ice-cream.

Traded Unit GTIN: 05011273624102 Internal GTIN: 5011273024100 Supplier: Rowse Honey Ltd Suppliers Product Code: 92410

Reference Intake



Nutritional Information

| Typical Values | Per 100g |
|--------------------|-------------------|
| Energy | 1150kJ 271kCal |
| Carbohydrates | 67g |
| of which sugars | 64g |
| Fat | <0.5g |
| of which saturates | <0.1g |
| Fibre | <0.5g |
| Protein | <0.5g |
| Salt | 0.03g |

Allergy Information

Key: Contains May Contain



Gluten Claim

Gluten content is less than 20ppm.

Ingredients

100% Canadian Maple Syrup

Dietary Information

Key: Suitable for

