

The information on the [Erudus System](#) has been supplied by the manufacturers of the products and, whilst the owners of the Erudus System take steps to ensure the information is regularly updated, they give no warranty and no guarantee that the information is accurate. Product information and ingredients may change, please always read product labels carefully in addition to using the information provided by Erudus One.

We do not accept liability for any inaccuracies or incorrect information contained on this site. Please visit <http://www.erudus.com/terms-and-conditions> for full terms and conditions.

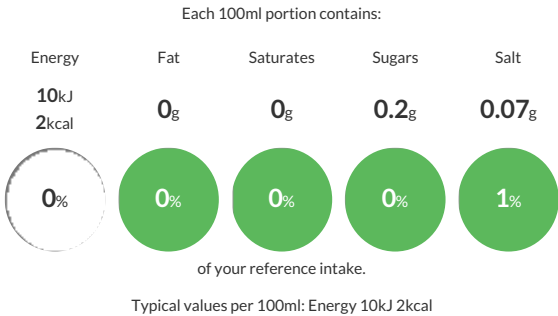
Lucozade Alert Mango Peachade Can 24ml x 250ml

Short Product Name:
Lucozade Alert Mango Peachade Can 24ml x 250ml

Sparkling Lucozade Sugar Free Mango and Peach Energy drink sweeteners

Traded Unit GTIN: 05054267504561 Internal GTIN: 5054267014572 Supplier : Lucozade Ribena Suntory Limited Suppliers Product Code: F97736

Reference Intake



Nutritional Information

Typical Values	Per 100ml
Energy	10kJ 2kCal
Carbohydrates	0.2g
of which sugars	0.2g
Fat	0g
of which saturates	0g
Fibre	-g
Protein	<0.5g
Salt	0.07g

Allergy Information

Key: Contains May Contain


Does Not Contain Cereal/Gluten


Does Not Contain Milk


Does Not Contain Eggs


Does Not Contain Peanuts


Does Not Contain Nuts


Does Not Contain Crustaceans


Does Not Contain Mustard


Does Not Contain Fish


Does Not Contain Lupin


Does Not Contain Sesame


Does Not Contain Celery


Does Not Contain Soya


Does Not Contain Molluscs


Does Not Contain Sulphur Dioxide

Dietary Information

Key: Suitable for


Suitable for Vegetarian


Suitable for Vegan


May not be suitable for Kosher


May not be suitable for Halal


NO DATA for Coeliac

Ingredients

Carbonated Water, Apple Juice from Concentrate (2%), Flavour Enhancer(Arythritol) Sugar, Acid (Citric Acid), Acidity Regulator (Sodium Citrate), Flavourings, Caffeine (0.03%), Sweeteners (Acesulfame K, Sucralose), Antioxidant (Ascorbic Acid), Stabiliser (Xanthan Gum), Niacin (Vitamin B3), Colour

Contains negligible amounts of - Fat , Saturates and Protein

* Reference intake of an average adult(8400kJ/2000kcal).