

The information on the [Erudus System](#) has been supplied by the manufacturers of the products and, whilst the owners of the Erudus System take steps to ensure the information is regularly updated, they give no warranty and no guarantee that the information is accurate. Product information and ingredients may change, please always read product labels carefully in addition to using the information provided by Erudus One.

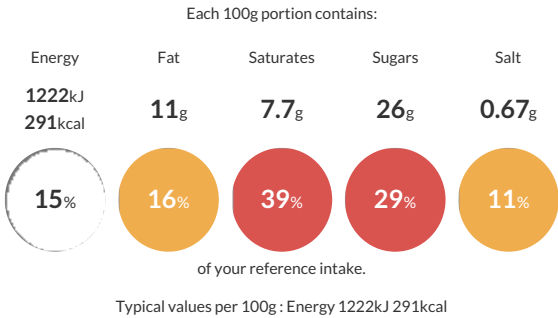
We do not accept liability for any inaccuracies or incorrect information contained on this site. Please visit <http://www.erudus.com/terms-and-conditions> for full terms and conditions.

Mondelez Oreo MDL OreoSand 24x110ml Uk

Chocolate flavoured sandwich cookies filled with vanilla flavour ice cream with crushed chocolate flavoured cookie pieces

Traded Unit GTIN: 18051369005341 Internal GTIN: 8051369005344 Supplier: Froneri Ice Cream UK Limited Suppliers Product Code: 31026431

Reference Intake



Nutritional Information

Typical Values	Per 100g
Energy	1222kJ 291kCal
Carbohydrates	41g
of which sugars	26g
Fat	11g
of which saturates	7.7g
Fibre	2.7g
Protein	5.2g
Salt	0.67g

Allergy Information

Key: Contains May Contain


Contains Cereal/Gluten


Contains Milk


May Contain Eggs


May Contain Peanuts


May Contain Nuts


Does Not Contain Crustaceans


May Contain Mustard


Does Not Contain Fish


Does Not Contain Lupin


Does Not Contain Sesame


Does Not Contain Celery


Contains Soya


Does Not Contain Molluscs


Does Not Contain Sulphur Dioxide

Dietary Information

Key: Suitable for


Suitable for Vegetarian


May not be suitable for Vegan


May not be suitable for Kosher


May not be suitable for Halal


May not be suitable for Coeliac

Ingredients

Reconstituted skimmed **MILK**, chocolate flavoured sandwich cookies (35%) [**WHEAT** flour, sugar, fat reduced cocoa powder, palm oil, glucose syrup, raising agent, (sodium hydrogen carbonate), flavouring, salt, acidity regulators (E524, E527)], sugar, coconut oil, crushed chocolate flavoured cookie pieces (3.5%) [**WHEAT** flour, sugar, rapeseed oil, fat reduced cocoa powder, glucose-fructose syrup, **WHEAT** starch, raising agents (ammonium, potassium and sodium carbonates), palm oil, salt, emulsifier (**SOYA** lecithin), acidity regulator (sodium hydroxide), flavourings], glucose syrup, whey powder (from **MILK**), skimmed **MILK** powder, emulsifier (E471) stabilisers (E410, E412), flavouring.