

The information on the [Erudus System](#) has been supplied by the manufacturers of the products and, whilst the owners of the Erudus System take steps to ensure the information is regularly updated, they give no warranty and no guarantee that the information is accurate. Product information and ingredients may change, please always read product labels carefully in addition to using the information provided by Erudus One.

We do not accept liability for any inaccuracies or incorrect information contained on this site. Please visit <http://www.erudus.com/terms-and-conditions> for full terms and conditions.

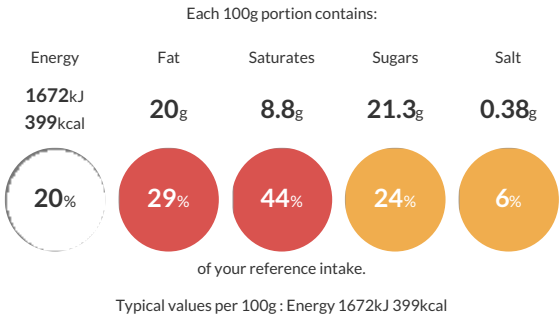
Mini Sugared Donuts 13.5g (1 x 200)

Short Product Name:
Mini Sugared Donuts 13.5g (1 x 200)

A mini plain ring donut coated in sugar (7%). Palm from a sustainable source, RSPO Cert No: BMT-RSPO-001049. (1 x 200)

Traded Unit GTIN: 05060062474107 Internal GTIN: Supplier: Central Foods Group Limited Suppliers Product Code: KB1699

Reference Intake



Nutritional Information


Typical Values	Per 100g
Energy	1672kJ 399kCal
Carbohydrates	48.6g
of which sugars	21.3g
Fat	20g
of which saturates	8.8g
Fibre	1.5g
Protein	5.5g
Salt	0.38g

Allergy Information


Key: Contains May Contain


Contains Cereal/Gluten


Contains Milk


Contains Eggs



Does Not Contain Peanuts


Does Not Contain Nuts



Does Not Contain Crustaceans



Does Not Contain Mustard


Does Not Contain Fish



Does Not Contain Lupin


Does Not Contain Sesame


Does Not Contain Celery


Contains Soya


Does Not Contain Molluscs


Does Not Contain Sulphur Dioxide

Dietary Information

Key: Suitable for


Suitable for Vegetarian


May not be suitable for Vegan


May not be suitable for Kosher


May not be suitable for Halal


NO DATA for Coeliac

Ingredients

Fortified Wheat Flour (**WHEAT** Flour, Calcium Carbonate, Niacin, Iron, Thiamin), Sugar, Palm Oil, Water, Rapeseed Oil, Raising Agents (Diphosphates, Potassium Carbonates), Skimmed **MILK** Powder, Defatted **SOYA** Flour, Whey Powder (**MILK**), Dextrose, Free Range **EGG** Yolk Powder, Emulsifiers (**SOYA** Lecithins, Mono- and Diglycerides of Fatty Acids, Sodium Stearoyl-2-Lactylate), Maize Starch, **OAT** Fibre, **MILK** Protein.