

The information on the [Erudus System](#) has been supplied by the manufacturers of the products and, whilst the owners of the Erudus System take steps to ensure the information is regularly updated, they give no warranty and no guarantee that the information is accurate. Product information and ingredients may change, please always read product labels carefully in addition to using the information provided by Erudus One.

We do not accept liability for any inaccuracies or incorrect information contained on this site. Please visit <http://www.erudus.com/terms-and-conditions> for full terms and conditions.

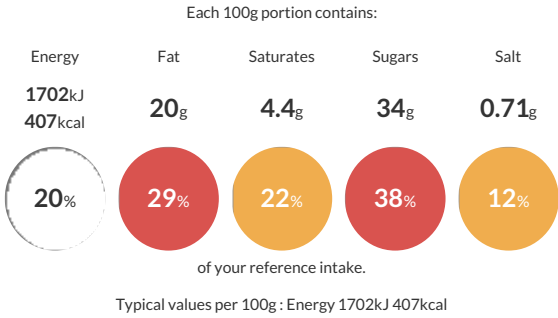
Chocolate Caramel Crown Cake 14ptn

Short Product Name:
Chocolate Caramel Crown Cake

A rich chocolate flavour cake filled with luxury caramel and topped with an indulgent chocolate fudge flavour icing drizzled with caramel and topped with chocolate fudge flavour icing rosettes and a gold-colour chocolate crowns. Portioned into 14 slices.

Traded Unit GTIN: **5060158957910** Internal GTIN: Supplier : **Love Handmade Cakes (Exquisite Handmade Cakes)** Suppliers Product Code : **FSSPCCRC**

Reference Intake



Nutritional Information

Typical Values	Per 100g
Energy	1702kJ 407kCal
Carbohydrates	50g
of which sugars	34g
Fat	20g
of which saturates	4.4g
Fibre	-g
Protein	4.7g
Salt	0.71g

Allergy Information

Key: **Contains** **May Contain**


Contains Cereal/Gluten


Contains Milk


Contains Eggs


May Contain Peanuts


May Contain Nuts


Does Not Contain Crustaceans


Does Not Contain Mustard


Does Not Contain Fish


Does Not Contain Lupin


Does Not Contain Sesame


Does Not Contain Celery


Contains Soya


Does Not Contain Molluscs


Does Not Contain Sulphur Dioxide

Dietary Information

Key: **Suitable for**


Suitable for Vegetarian


May not be suitable for Vegan


May not be suitable for Kosher


May not be suitable for Halal


May not be suitable for Coeliac

Allergen Statement
For allergens, including cereals containing gluten, see ingredients in **BOLD**. May contain peanuts, nuts and other gluten containing cereals.

Ingredients

Sugar, Wheat Flour (**WHEAT** Flour, Calcium Carbonate, Iron, Niacin, Thiamine), Pasteurised Liquid Whole **EGG**, Chocolate Fudge Icing (13%) (Sugar, Palm Oil, Rapeseed Oil, Water, Fat Reduced Cocoa Powder (5%), Salt, Emulsifiers (E475, E471, **SOYA** Lecithin), Flavourings, Colours (E100, E160b(i)), Preservative (E202)), Rapeseed Oil, Caramel Sauce (12%) (Sweetened Condensed Milk (**MILK**, Sugar, Lactose (**MILK**)), Sugar, Salted Butter (Butter (**MILK**), Salt), Partially Inverted Sugar Syrup, Glucose Syrup), Humectant (Vegetable Glycerine), Modified Maize Starch, Fat Reduced Cocoa Powder (1%), Whey Powder (**MILK**), Chocolate Crown (Sugar, Cocoa Mass, Cocoa Butter, Emulsifier (**SOYA** Lecithin), Colour (E172), Natural Vanilla Flavouring), Raising Agents (E500, E450), Preservative (E202), Salt, Natural Flavouring.