

Supplier's Product Code :
 Product Added :
 Last Updated by Supplier :
 erudus id :

DW345020
 20 April 2026
 20 April 2026
 8694152fdbb04568b6f23f0a025c59eb



The information on the **Erudus System** has been supplied by the manufacturers of the products and, whilst the owners of the Erudus System take steps to ensure the information is regularly updated, they give no warranty and no guarantee that the information is accurate. Product information and ingredients may change, please always read product labels carefully in addition to using the information provided by Erudus One.

We do not accept liability for any inaccuracies or incorrect information contained on this site. Please visit <http://www.erudus.com/terms-and-conditions> for full terms and conditions.

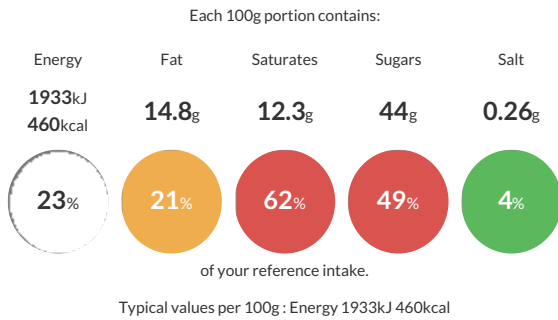
Rossini Deluxe Wafer Curls Tins 2 x 280

Short Product Name:
 Rossini Deluxe Wafer Curls Tins

Rolled wafer biscuit with dark stripe and chocolate flavoured coating on inside for ice cream decoration.

Traded Unit GTIN: **5060006360930** Internal GTIN: **5060006360640** Supplier: **Nic Ice Ltd** Suppliers Product Code: **DW345020**

Reference Intake



Nutritional Information

Typical Values	Per 100g
Energy	1933kJ 460kCal
Carbohydrates	75g
of which sugars	44g
Fat	14.8g
of which saturates	12.3g
Fibre	1.8g
Protein	6.1g
Salt	0.26g

Allergy Information

Key: **Contains** **May Contain**



Dietary Information

Key: **Suitable for**



Allergen Statement

For allergens including cereals containing gluten, see **CAPITALISED/BOLD** ingredients. Contains **MILK, GLUTEN, EGG** and **SOYA**.

Ingredients

Sugar, **WHEAT** flour (**WHEAT** flour, Calcium carbonate, Iron, Niacin, Thiamin), Vegetable fats (Palm oil, Kernel oil, Coconut oil), Fat reduced cocoa powder, Emulsifiers (**SOYA** lecithin, Sorbitan Tristearate, Sunflower lecithin, Rapeseed Lecithin), **WHEAT** starch, Maltodextrin, **EGG** albumen, Skimmed **MILK** powder, Caramelised sugar, Whey powder (**MILK**), Salt, Flavouring, Colour (Annatto Norbixin).