

The information on the [Erudus System](#) has been supplied by the manufacturers of the products and, whilst the owners of the Erudus System take steps to ensure the information is regularly updated, they give no warranty and no guarantee that the information is accurate. Product information and ingredients may change, please always read product labels carefully in addition to using the information provided by Erudus One.

We do not accept liability for any inaccuracies or incorrect information contained on this site. Please visit <http://www.erudus.com/terms-and-conditions> for full terms and conditions.

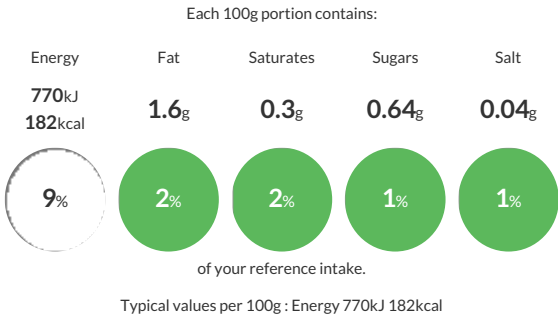
Ardo Pasta Spirelli 1x10kg

Short Product Name:
Pasta Spirelli

Spirelli is a corkscrew shaped pasta. The product is produced as fresh, from semolina (Triticum Durum) and water, worked into a dough, extruded, cooked, cooled and frozen to below -18°C.

Traded Unit GTIN: **5411361013878** Internal GTIN: Supplier: **Ardo UK** Suppliers Product Code: **3SPI810**

Reference Intake



Nutritional Information

Typical Values	Per 100g
Energy	770kJ 182kCal
Carbohydrates	33.9g
of which sugars	0.64g
Fat	1.6g
of which saturates	0.3g
Fibre	2.02g
Protein	7.03g
Salt	0.04g

Allergy Information

Key: **Contains** **May Contain**



Contains Cereal/Gluten



Does Not Contain Milk



Does Not Contain Eggs



Does Not Contain Peanuts



Does Not Contain Nuts



Does Not Contain Crustaceans



Does Not Contain Mustard



Does Not Contain Fish



Does Not Contain Lupin



Does Not Contain Sesame



Does Not Contain Celery



Does Not Contain Soya



Does Not Contain Molluscs



Does Not Contain Sulphur Dioxide

Allergen Statement
cereals containing gluten and products thereof: durum wheatflour

Ingredients

Water 53%, durum (**WHEAT**) flour 47%

Dietary Information

Key: **Suitable for**



Suitable for Vegetarian



Suitable for Vegan



May not be suitable for Kosher



May not be suitable for Halal



May not be suitable for Coeliac