

The information on the [Erudus System](#) has been supplied by the manufacturers of the products and, whilst the owners of the Erudus System take steps to ensure the information is regularly updated, they give no warranty and no guarantee that the information is accurate. Product information and ingredients may change, please always read product labels carefully in addition to using the information provided by Erudus One.

We do not accept liability for any inaccuracies or incorrect information contained on this site. Please visit <http://www.erudus.com/terms-and-conditions> for full terms and conditions.

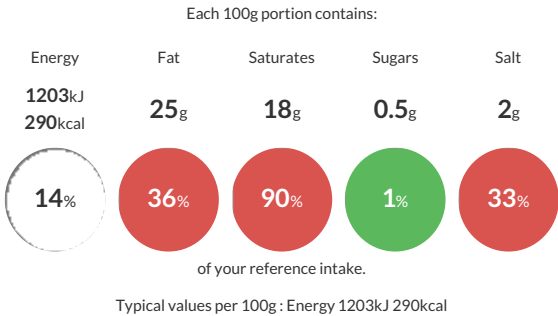
YAMAS! Feta, 12x200g

Short Product Name:  
15267 (YAM016) YAMAS! Feta, 12x200g

PDO Greek Feta made from Pasteurised Sheep & Goat's MILK

Traded Unit GTIN: 05038961001212 Internal GTIN: 5038961001205 Supplier : Futura Foods UK Ltd Suppliers Product Code : 15267 (YAM016)

Reference Intake



Nutritional Information

Typical Values	Per 100g
Energy	1203kJ 290kCal
Carbohydrates	1g
of which sugars	0.5g
Fat	25g
of which saturates	18g
Fibre	-g
Protein	16g
Salt	2g

Allergy Information

Key: Contains May Contain

Gluten < 20ppm  
Does Not Contain Cereal/Gluten

Contains Milk

Does Not Contain Eggs

Does Not Contain Peanuts

Does Not Contain Nuts

Does Not Contain Crustaceans

Does Not Contain Mustard

Does Not Contain Fish

Does Not Contain Lupin

Does Not Contain Sesame

Does Not Contain Celery

Does Not Contain Soya

Does Not Contain Molluscs

Does Not Contain Sulphur Dioxide

**Gluten Claim**  
Gluten content is less than 20ppm.

**Allergen Statement**  
contains Pasteurised Sheep & Goat's MILK

Ingredients

Feta Cheese (MILK)

Dietary Information

Key: Suitable for

Suitable for Vegetarian

NO DATA for Vegan

May not be suitable for Kosher

May not be suitable for Halal

Suitable for Coeliac