

Supplier's Product Code :
Product Added :
Last Updated by Supplier :
erudus id :

BTB012
15 June 2023
23 November 2023
87cf166fe18749538d402cc5598a5573



The information on the **Erudus System** has been supplied by the manufacturers of the products and, whilst the owners of the Erudus System take steps to ensure the information is regularly updated, they give no warranty and no guarantee that the information is accurate. Product information and ingredients may change, please always read product labels carefully in addition to using the information provided by Erudus One.

We do not accept liability for any inaccuracies or incorrect information contained on this site. Please visit <http://www.erudus.com/terms-and-conditions> for full terms and conditions.

Mixed Traybake - 5 variety pack (1x30) - Belgian Chocolate Caramel Krispie - 6 slices

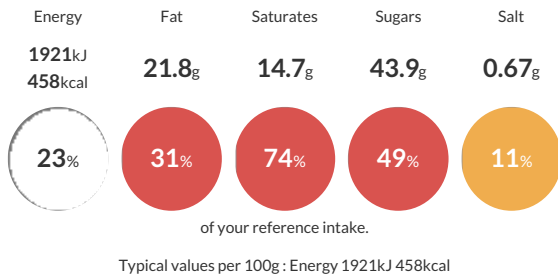
Short Product Name:
Mixed traybake

A frozen mixed traybake of 5 variety pack: 6 slices of Belgian Chocolate Caramel Krispie, 6 slices of Belgian Milk Chocolate Millionaire Shortbread, 6 slices of Butterscotch and Pecan, 6 slices of Lemon Pavlova Slice and 6 slices of Snowy Rocky Road. BELGIAN CHOCOLATE CARAMEL KRISPIE - 6 SLICES A caramel and Belgian milk chocolate-coated crisp rice cereal covered with a dark chocolate flavoured coating. BELGIAN MILK CHOCOLATE MILLIONAIRE SHORTBREAD - 6 SLICES A shortbread covered with rich caramel and topped with Belgian milk chocolate. BUTTERSCOTCH AND PECAN - 6 SLICES A shortbread base with a sugar-frosted cereal flake, pecan and caramel topping. LEMON PAVLOVA SLICE - 6 SLICES A frozen shortbread base topped with lemon curd, meringue pieces, marshmallows and Belgian white chocolate and decorated with lemon curd swirls. SNOWY ROCKY ROAD - 6 SLICES A rich tea biscuit, marshmallows, sweetened dried cranberries and dried apricots mixed with a white chocolate flavour coating and dusted with sweet snow.

Traded Unit GTIN: **5060082388415** Internal GTIN: Supplier: **Sussex Bakes Ltd T/A More Food** Suppliers Product Code: **BTB012**

Reference Intake

Each 100g portion contains:



Nutritional Information

Typical Values	Per 100g
Energy	1921kJ 458kCal
Carbohydrates	60.8g
of which sugars	43.9g
Fat	21.8g
of which saturates	14.7g
Fibre	1.8g
Protein	4.6g
Salt	0.67g

Allergy Information

Key: **Contains** **May Contain**



Dietary Information

Key: **Suitable for**



Allergen Statement

May also contain Eggs, Sulphites and Nuts.

Ingredients

Partially Inverted Refiners Syrup, Belgian Milk Chocolate (20%) (Sugar, Cocoa Butter, Whole MILK Powder, Cocoa Mass, Emulsifier (SOYA Lecithins), Natural Vanilla Flavouring), Dark Chocolate Flavour Coating (20%) (Sugar, Vegetable Oils (Palm, Palm Kernel), Fat Reduced Cocoa Powder, Wheat Flour (WHEAT Flour, Calcium Carbonate, Niacin, Iron, Thiamin), Whey Powder (MILK), Emulsifiers (SOYA Lecithins, Polyglycerol Polycricinoleate), Natural Flavouring), Rice Cereal (20%) (Rice Flour, Wheat Flour (WHEAT Flour, Calcium Carbonate, Niacin, Iron, Thiamin), Sugar, Whey Powder (MILK), BARLEY Malt Flour, Salt, Rapeseed Oil, Emulsifier (SOYA Lecithin)), Caramel (8%) (Sugar, Glucose Syrup, Sweetened Condensed Milk (MILK, Sugar, Lactose (MILK)), Water, Butter (MILK), Partially Inverted Refiners Syrup, Palm Oil, Salt, Emulsifiers (Lecithins (Sunflower, Rapeseed, SOYA), Sorbitan Monostearate), Natural Flavouring), Butter (MILK), BARLEY Malt Extract, Salt.

Mixed Traybake - 5 variety pack (1x30) - Belgian Milk Chocolate Millionaire Shortbread - 6 slices

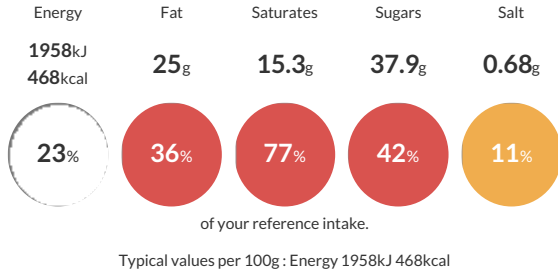
Short Product Name:
Mixed traybake

A frozen mixed traybake of 5 variety pack: 6 slices of Belgian Chocolate Caramel Krispie, 6 slices of Belgian Milk Chocolate Millionaire Shortbread, 6 slices of Butterscotch and Pecan, 6 slices of Lemon Pavlova Slice and 6 slices of Snowy Rocky Road. BELGIAN CHOCOLATE CARAMEL KRISPIE - 6 SLICES A caramel and Belgian milk chocolate-coated crisp rice cereal covered with a dark chocolate flavoured coating. BELGIAN MILK CHOCOLATE MILLIONAIRE SHORTBREAD - 6 SLICES A shortbread covered with rich caramel and topped with Belgian milk chocolate. BUTTERSCOTCH AND PECAN - 6 SLICES A shortbread base with a sugar-frosted cereal flake, pecan and caramel topping. LEMON PAVLOVA SLICE - 6 SLICES A frozen shortbread base topped with lemon curd, meringue pieces, marshmallows and Belgian white chocolate and decorated with lemon curd swirls. SNOWY ROCKY ROAD - 6 SLICES A rich tea biscuit, marshmallows, sweetened dried cranberries and dried apricots mixed with a white chocolate flavour coating and dusted with sweet snow.

Traded Unit GTIN: 5060082388415 Internal GTIN: Supplier: Sussex Bakes Ltd T/A More Food Suppliers Product Code: BTB012

Reference Intake

Each 100g portion contains:



Nutritional Information

Typical Values	Per 100g
Energy	1958kJ 468kCal
Carbohydrates	58.1g
of which sugars	37.9g
Fat	25g
of which saturates	15.3g
Fibre	0.9g
Protein	3.5g
Salt	0.68g

Allergy Information

Key: Contains May Contain



Allergen Statement

May also contain Barley, Eggs, Sulphites and Nuts.

Dietary Information

Key: Suitable for



Ingredients

Caramel (38%) (Sugar, Glucose Syrup, Sweetened Condensed Milk (MILK, Sugar, Lactose (MILK)), Water, Butter (MILK), Partially Inverted Refiners Syrup, Palm Oil, Salt, Emulsifiers (Lecithins (Sunflower, Rapeseed, SOYA), Sorbitan Monostearate), Natural Flavouring), Belgian Milk Chocolate (19%) (Sugar, Cocoa Butter, Whole MILK Powder, Cocoa Mass, Emulsifier (SOYA Lecithins), Natural Vanilla Flavouring), Wheat Flour (WHEAT Flour, Calcium Carbonate, Iron, Niacin, Thiamin), Margarine (Vegetable Oils (Palm, Rapeseed), Water, Salt, Emulsifier (Mono- and Diglycerides of Fatty Acids)), Butter (MILK), Sugar, Cornflour, Salt.

Mixed Traybake - 5 variety pack (1x30) - Butterscotch and Pacan - 6 slices

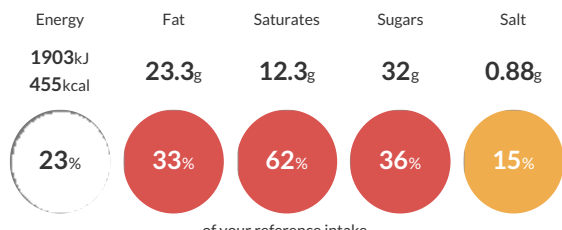
Short Product Name:
Mixed traybake

A frozen mixed traybake of 5 variety pack: 6 slices of Belgian Chocolate Caramel Krispie, 6 slices of Belgian Milk Chocolate Millionaire Shortbread, 6 slices of Butterscotch and Pecan, 6 slices of Lemon Pavlova Slice and 6 slices of Snowy Rocky Road. BELGIAN CHOCOLATE CARAMEL KRISPIE - 6 SLICES A caramel and Belgian milk chocolate-coated crisp rice cereal covered with a dark chocolate flavoured coating. BELGIAN MILK CHOCOLATE MILLIONAIRE SHORTBREAD - 6 SLICES A shortbread covered with rich caramel and topped with Belgian milk chocolate. BUTTERSCOTCH AND PECAN - 6 SLICES A shortbread base with a sugar-frosted cereal flake, pecan and caramel topping. LEMON PAVLOVA SLICE - 6 SLICES A frozen shortbread base topped with lemon curd, meringue pieces, marshmallows and Belgian white chocolate and decorated with lemon curd swirls. SNOWY ROCKY ROAD - 6 SLICES A rich tea biscuit, marshmallows, sweetened dried cranberries and dried apricots mixed with a white chocolate flavour coating and dusted with sweet snow.

Traded Unit GTIN: 5060082388415 Internal GTIN: Supplier: Sussex Bakes Ltd T/A More Food Suppliers Product Code: BTB012

Reference Intake

Each 100g portion contains:



of your reference intake.

Typical values per 100g : Energy 1903kJ 455kcal

Nutritional Information

Typical Values	Per 100g
Energy	1903kJ 455kCal
Carbohydrates	59.5g
of which sugars	32g
Fat	23.3g
of which saturates	12.3g
Fibre	1.2g
Protein	3.3g
Salt	0.88g

Allergy Information

Key: Contains May Contain



Allergen Statement

May also contain Eggs and other Nuts.

Dietary Information

Key: Suitable for



Ingredients

Caramel (40%) (Sugar, Glucose Syrup, Sweetened Condensed Milk (MILK, Sugar, Lactose (MILK)), Water, Butter (MILK), Partially Inverted Refiners Syrup, Palm Oil, Salt, Emulsifiers (Lecithins (Sunflower, Rapeseed, SOYA), Sorbitan Monostearate), Natural Flavouring), Wheat Flour (WHEAT Flour, Calcium Carbonate, Iron, Niacin, Thiamin), Sugar Frosted Flakes of Corn (8%) (Maize, Sugar, BARLEY Malt Extract, Salt), Margarine (Vegetable Oils (Palm, Rapeseed), Water, Salt, Emulsifier (Mono- and Diglycerides of Fatty Acids)), Butter (MILK), Sugar, PECAN Pieces (5%), Cornflour, Salt.

Mixed Traybake - 5 variety pack (1x30) - Lemon Pavlova Slice - 6 slices

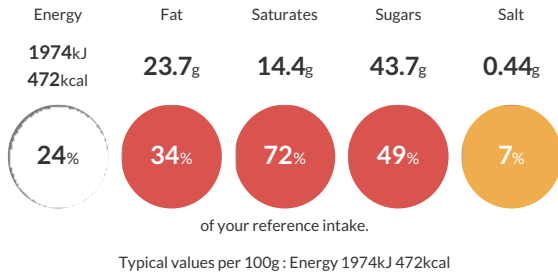
Short Product Name:
Mixed traybake

A frozen mixed traybake of 5 variety pack: 6 slices of Belgian Chocolate Caramel Krispie, 6 slices of Belgian Milk Chocolate Millionaire Shortbread, 6 slices of Butterscotch and Pecan, 6 slices of Lemon Pavlova Slice and 6 slices of Snowy Rocky Road. BELGIAN CHOCOLATE CARAMEL KRISPIE - 6 SLICES A caramel and Belgian milk chocolate-coated crisp rice cereal covered with a dark chocolate flavoured coating. BELGIAN MILK CHOCOLATE MILLIONAIRE SHORTBREAD - 6 SLICES A shortbread covered with rich caramel and topped with Belgian milk chocolate. BUTTERSCOTCH AND PECAN - 6 SLICES A shortbread base with a sugar-frosted cereal flake, pecan and caramel topping. LEMON PAVLOVA SLICE - 6 SLICES A frozen shortbread base topped with lemon curd, meringue pieces, marshmallows and Belgian white chocolate and decorated with lemon curd swirls. SNOWY ROCKY ROAD - 6 SLICES A rich tea biscuit, marshmallows, sweetened dried cranberries and dried apricots mixed with a white chocolate flavour coating and dusted with sweet snow.

Traded Unit GTIN: 5060082388415 Internal GTIN: Supplier: Sussex Bakes Ltd T/A More Food Suppliers Product Code: BTB012

Reference Intake

Each 100g portion contains:



Nutritional Information

Typical Values	Per 100g
Energy	1974kJ 472kCal
Carbohydrates	61.9g
of which sugars	43.7g
Fat	23.7g
of which saturates	14.4g
Fibre	0.6g
Protein	3.8g
Salt	0.44g

Allergy Information

Key: Contains May Contain



Dietary Information

Key: Suitable for



Allergen Statement

May contain Barley, Sulphites and Nuts.

Ingredients

Belgian White Chocolate (30%) (Sugar, Cocoa Butter, Whole MILK Powder, Emulsifier (SOYA Lecithin), Natural Vanilla Flavouring), Lemon Curd (20%) (Sugar, Water, Glucose Syrup, Concentrated Lemon Juice, Margarine (Fat Blend (Palm, Palm Stearine, Coconut Oil, Rapeseed Oil), Water, Lemon Juice), EGG Powder, WHEAT Starch, Modified WHEAT Starch, Gelling Agent (Pectin), Lemon Oil, Acidity Regulators (Citric Acid, Sodium Citrate), Colours (Lutein, Curcumin)), Wheat Flour (WHEAT Flour, Calcium Carbonate, Iron, Niacin, Thiamin), Meringue (9%) (Sugar, Free Range EGG Albumen, Palm Fat, WHEAT Starch), Margarine (Vegetable Oils (Palm, Rapeseed), Water, Salt, Emulsifier (Mono- and Diglycerides of Fatty Acids)), Butter (MILK), Sugar, Cornflour, Marshmallows (1%) (Glucose-Fructose Syrup, Sugar, Water, Pork Gelatine, Anti-Caking Agent (Maize Starch), Flavouring), Salt.

Mixed Traybake - 5 variety pack (1x30) - Snowy Rocky Road - 6 slices

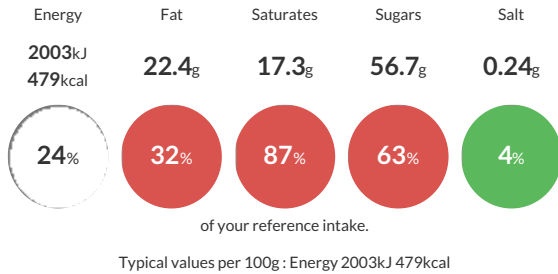
Short Product Name:
Mixed traybake

A frozen mixed traybake of 5 variety pack: 6 slices of Belgian Chocolate Caramel Krispie, 6 slices of Belgian Milk Chocolate Millionaire Shortbread, 6 slices of Butterscotch and Pecan, 6 slices of Lemon Pavlova Slice and 6 slices of Snowy Rocky Road. BELGIAN CHOCOLATE CARAMEL KRISPIE - 6 SLICES A caramel and Belgian milk chocolate-coated crisp rice cereal covered with a dark chocolate flavoured coating. BELGIAN MILK CHOCOLATE MILLIONAIRE SHORTBREAD - 6 SLICES A shortbread covered with rich caramel and topped with Belgian milk chocolate. BUTTERSCOTCH AND PECAN - 6 SLICES A shortbread base with a sugar-frosted cereal flake, pecan and caramel topping. LEMON PAVLOVA SLICE - 6 SLICES A frozen shortbread base topped with lemon curd, meringue pieces, marshmallows and Belgian white chocolate and decorated with lemon curd swirls. SNOWY ROCKY ROAD - 6 SLICES A rich tea biscuit, marshmallows, sweetened dried cranberries and dried apricots mixed with a white chocolate flavour coating and dusted with sweet snow.

Traded Unit GTIN: 5060082388415 Internal GTIN: Supplier: Sussex Bakes Ltd T/A More Food Suppliers Product Code: BTB012

Reference Intake

Each 100g portion contains:



Nutritional Information

Typical Values	Per 100g
Energy	2003kJ 479kCal
Carbohydrates	66.7g
of which sugars	56.7g
Fat	22.4g
of which saturates	17.3g
Fibre	1g
Protein	2.7g
Salt	0.24g

Allergy Information

Key: Contains May Contain



Dietary Information

Key: Suitable for



Allergen Statement

May also contain Eggs, Soya and Nuts.

Ingredients

White Chocolate Flavour Coating (61%) (Sugar, Palm Oil, Whey Powder (**MILK**), Emulsifier (Lecithins), Natural Flavouring), Rich Tea Biscuit (13%) (Wheat Flour (**WHEAT** Flour, Calcium, Iron, Niacin, Thiamin), Sugar, Vegetable Oils (Palm Oil, Rapeseed Oil), **BARLEY** Malt Extract, Raising Agents (Sodium Carbonate, Ammonium Carbonate, Disodium Diphosphate), Glucose Syrup, Salt, Preservative (Sodium **METABISULPHITE**)), Marshmallows (10%) (Glucose-Fructose Syrup, Sugar, Water, Pork Gelatine, Anti-Caking Agent (Maize Starch), Flavouring), Dried Apricots (7%) (Dried Apricots, Rice Flour, Preservative (**SULPHUR DIOXIDE**)), Dried Sweetened Cranberries (5%) (Cranberries, Sugar, Sunflower Oil), Sweet Dusting (2%) (Dextrose, **WHEAT** Starch, Vegetable Oils (Palm, Rapeseed), Salt, Natural Flavouring).