

The information on the [Erudus System](#) has been supplied by the manufacturers of the products and, whilst the owners of the Erudus System take steps to ensure the information is regularly updated, they give no warranty and no guarantee that the information is accurate. Product information and ingredients may change, please always read product labels carefully in addition to using the information provided by Erudus One.

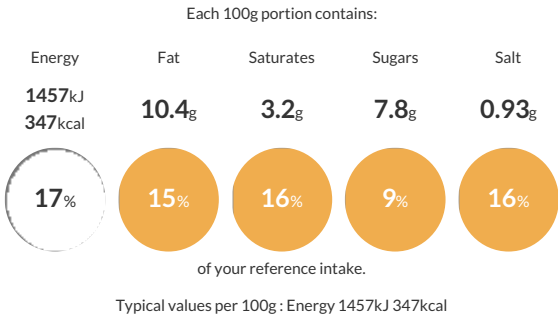
We do not accept liability for any inaccuracies or incorrect information contained on this site. Please visit <http://www.erudus.com/terms-and-conditions> for full terms and conditions.

LARGE GLAZED BRIOCHE HOT DOG ROLLS (PLANT-BASED) (RTA)

Short Product Name:
LARGE GLAZED BRIOCHE HOT DOG ROLL (PLANT-BASED)
FROZEN, FULLY BAKED, GLAZED, INDIVIDUAL BREAD PIECE.

Traded Unit GTIN: 5032633152103 Internal GTIN: Supplier : Speciality Breads Limited Suppliers Product Code : FB210

Reference Intake



Nutritional Information

Typical Values	Per 100g
Energy	1457kJ 347kCal
Carbohydrates	54g
of which sugars	7.8g
Fat	10.4g
of which saturates	3.2g
Fibre	2.4g
Protein	9.6g
Salt	0.93g

Allergy Information

Key: Contains May Contain


Contains
Cereal/Gluten



May Contain
Milk


May Contain
Eggs


Does Not
Contain
Peanuts


Does Not
Contain
Nuts


Does Not
Contain
Crustaceans


Does Not
Contain
Mustard


Does Not
Contain
Fish


Does Not
Contain
Lupin


Does Not
Contain
Sesame


Does Not
Contain
Celery


Does Not
Contain
Soya


Does Not
Contain
Molluscs


Does Not
Contain
Sulphur
Dioxide

Dietary Information

Key: Suitable for


Suitable for
Vegetarian


Suitable for
Vegan


May not be
suitable for
Kosher


May not be
suitable for
Halal


NO DATA for
Coeliac

Ingredients

Wheat Flour (Fortified with Calcium Carbonate, Niacin, Iron, Thiamin), Water, Margarine (Vegetable oils: Palm, Rapeseed; Water; Salt; Emulsifier: E 475; Flavouring; Colour: E 160b(i), Curcumin), Sugar, Wheat Starch, Glaze <2% (water, vegetable protein, rapeseed oil, maltodextrin, dextrose, starch), Yeast, Bread Improver (Wheat Gluten, Wheat Flour, Emulsifiers: E 471, E 481, Flour Treatment Agent: E 300), Salt, Natural Flavouring, Turmeric