

The information on the [Erudus System](#) has been supplied by the manufacturers of the products and, whilst the owners of the Erudus System take steps to ensure the information is regularly updated, they give no warranty and no guarantee that the information is accurate. Product information and ingredients may change, please always read product labels carefully in addition to using the information provided by Erudus One.

We do not accept liability for any inaccuracies or incorrect information contained on this site. Please visit <http://www.erudus.com/terms-and-conditions> for full terms and conditions.

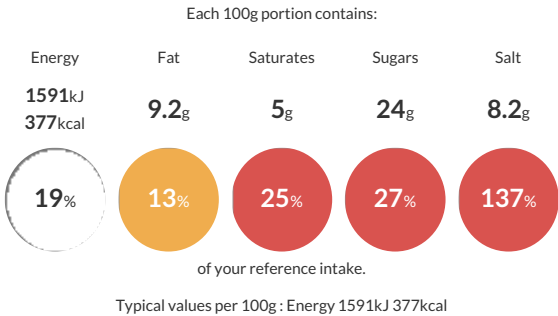
Sysco Essentials Chicken Soup Mix

Short Product Name:
Chicken Soup Mix

Chicken Soup Mix

Traded Unit GTIN: 05024333258162 Internal GTIN: 5024333258155 Supplier : Sysco GB Limited Suppliers Product Code : 136688

Reference Intake



Nutritional Information

Typical Values	Per 100g
Energy	1591kJ 377kCal
Carbohydrates	66g
of which sugars	24g
Fat	9.2g
of which saturates	5g
Fibre	1.6g
Protein	6.9g
Salt	8.2g

Allergy Information

Key: Contains May Contain


Contains
Cereal/Gluten


Contains
Milk


May Contain
Eggs


Does Not
Contain
Peanuts


Does Not
Contain
Nuts


Does Not
Contain
Crustaceans


May Contain
Mustard


Does Not
Contain
Fish


Does Not
Contain
Lupin


Does Not
Contain
Sesame


Does Not
Contain
Celery


May Contain
Soya


Does Not
Contain
Molluscs


Does Not
Contain
Sulphur
Dioxide

Dietary Information

Key: Suitable for


May not be
suitable for
Vegetarian


May not be
suitable for
Vegan


NO DATA for
Kosher


NO DATA for
Halal


NO DATA for
Coeliac

Ingredients

Wheat Flour (with Calcium, Iron, Niacin, Thiamin), Maltodextrin, Cornflour, Whey Powder (Milk), Palm Oil, Flavourings (Milk), Salt, Dried Glucose Syrup, Chicken Powder (2.0%) (Chicken, Antioxidant (Rosemary Extract)), Sugar, Onion Powder, Milk Proteins, Stabiliser (Potassium Phosphates), Emulsifier(Mono- and Di- Glycerides of Fatty Acids).