

The information on the [Erudus System](#) has been supplied by the manufacturers of the products and, whilst the owners of the Erudus System take steps to ensure the information is regularly updated, they give no warranty and no guarantee that the information is accurate. Product information and ingredients may change, please always read product labels carefully in addition to using the information provided by Erudus One.

We do not accept liability for any inaccuracies or incorrect information contained on this site. Please visit <http://www.erudus.com/terms-and-conditions> for full terms and conditions.

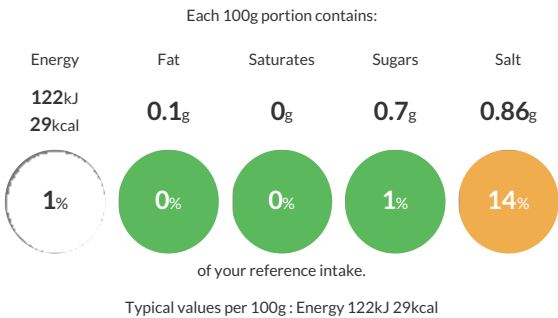
Demi-Glace 12 x 1L

Short Product Name:  
Demi-Glace

A heat treated rich brown sauce made with a blend of vegetable and meat stocks and a hint of tomato.

Traded Unit GTIN: 05017506451163 Internal GTIN: 5017506701169 Supplier : Macphie Ltd Suppliers Product Code: 10000214

Reference Intake



Nutritional Information

Typical Values	Per 100g
Energy	122kJ 29kCal
Carbohydrates	6.2g
of which sugars	0.7g
Fat	0.1g
of which saturates	0g
Fibre	0.07g
Protein	0.6g
Salt	0.86g

Allergy Information

Key: Contains May Contain



Gluten < 20ppm


Does Not Contain Cereal/Gluten




Does Not Contain Milk



Does Not Contain Eggs



Does Not Contain Peanuts



Does Not Contain Nuts



Does Not Contain Crustaceans



Does Not Contain Mustard



Does Not Contain Fish



Does Not Contain Lupin



Does Not Contain Sesame



Does Not Contain Celery



Contains Soya



Does Not Contain Molluscs



Does Not Contain Sulphur Dioxide

Gluten Claim  
Gluten content is less than 20ppm.

Allergen Statement  
Contains: SOYA.

Ingredients

Reconstituted Vegetable, Chicken and Beef Stock 92% [Water, Flavouring (SOYA), Salt, Yeast Extract, Maltodextrin, Sugar, Hydrolysed SOYA Protein, Vegetable Extracts (Dried Onion, Dried Carrot, Dried Leek), Chicken Meat, Tomato Powder, Beef Extract, Vegetable Oils (Sunflower, Rapeseed), White Pepper, Dried Herb], Modified Starch, Tomato Puree, Colour (Amonia Caramel), Flavouring.

Dietary Information

Key: Suitable for



May not be suitable for Vegetarian



May not be suitable for Vegan



May not be suitable for Kosher



May not be suitable for Halal



Suitable for Coeliac