

The information on the [Erudus System](#) has been supplied by the manufacturers of the products and, whilst the owners of the Erudus System take steps to ensure the information is regularly updated, they give no warranty and no guarantee that the information is accurate. Product information and ingredients may change, please always read product labels carefully in addition to using the information provided by Erudus One.

We do not accept liability for any inaccuracies or incorrect information contained on this site. Please visit <http://www.erudus.com/terms-and-conditions> for full terms and conditions.

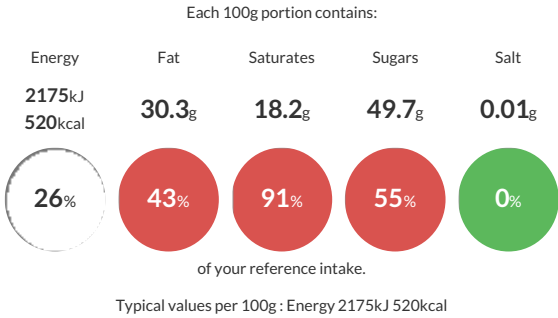
DARK SHAVINGS 2.5KG BOX

Short Product Name:

DARK SHAVINGS 2.5KG BOX

Traded Unit GTIN: **8711177639697** Internal GTIN: **8711177639697** Supplier : **Barry Callebaut Belgium NV & IBC Belgium** Suppliers Product Code : **CHD-SV-22283E0-74A**

Reference Intake




Nutritional Information

Typical Values	Per 100g
Energy	2175kJ 520kCal
Carbohydrates	52.2g
of which sugars	49.7g
Fat	30.3g
of which saturates	18.2g
Fibre	8g
Protein	5.1g
Salt	0.01g


Allergy Information

Key: **Contains** **May Contain**



Does Not Contain Cereal/Gluten


May Contain Milk



Does Not Contain Eggs


Does Not Contain Peanuts


Does Not Contain Nuts



Does Not Contain Crustaceans


Does Not Contain Mustard


Does Not Contain Fish


Does Not Contain Lupin


Does Not Contain Sesame


Does Not Contain Celery


Contains Soya


Does Not Contain Molluscs


Does Not Contain Sulphur Dioxide

Allergen Statement
MAY CONTAIN MILK

Ingredients

Sugar 49.5%, Cocoa mass 43.0%, Cocoa butter 7.0%, Emulsifier **SOYA** lecithin <1%, Natuaraal vanilla flavouring <1%

Dietary Information

Key: **Suitable for**


Suitable for Vegetarian


Suitable for Vegan


Suitable for Kosher


Suitable for Halal


May not be suitable for Coeliac