

Supplier's Product Code :
 Product Added :
 Last Updated by Supplier :
 erudus id :

63529
 16 March 2026
 16 March 2026
 8cc7517d08c64d8c8ceec752d6579a12



The information on the **Erudus System** has been supplied by the manufacturers of the products and, whilst the owners of the Erudus System take steps to ensure the information is regularly updated, they give no warranty and no guarantee that the information is accurate. Product information and ingredients may change, please always read product labels carefully in addition to using the information provided by Erudus One.

We do not accept liability for any inaccuracies or incorrect information contained on this site. Please visit <http://www.erudus.com/terms-and-conditions> for full terms and conditions.

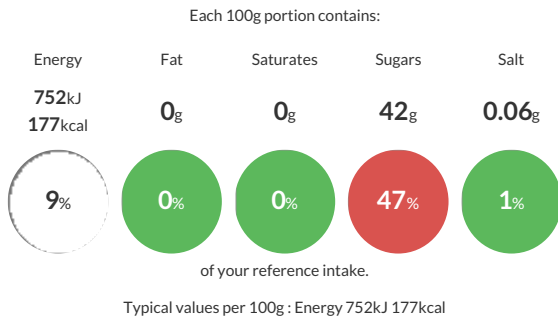
Freshburst® Pearls Beetroot Flavour 200g

Short Product Name:
 Beetroot Pearls

Flavoured Freshburst® Pearls with a liquid centre for an amazing taste sensation.

Traded Unit GTIN: **5060065763536** Internal GTIN: **5060065763529** Supplier: **Imaginative Cuisine Limited** Suppliers Product Code: **63529**

Reference Intake



Nutritional Information

Typical Values	Per 100g
Energy	752kJ 177kCal
Carbohydrates	43.5g
of which sugars	42g
Fat	0g
of which saturates	0g
Fibre	-g
Protein	0.35g
Salt	0.06g

Allergy Information

Key: **Contains** **May Contain**

Does Not Contain Cereal/Gluten	Does Not Contain Milk	Does Not Contain Eggs	Does Not Contain Peanuts	Does Not Contain Nuts	Does Not Contain Crustaceans	Does Not Contain Mustard
Does Not Contain Fish	Does Not Contain Lupin	Does Not Contain Sesame	Does Not Contain Celery	Does Not Contain Soya	Does Not Contain Molluscs	Does Not Contain Sulphur Dioxide

Dietary Information

Key: **Suitable for**

Suitable for Vegetarian	Suitable for Vegan	May not be suitable for Kosher	May not be suitable for Halal	NO DATA for Coeliac
-------------------------	--------------------	--------------------------------	-------------------------------	---------------------

Ingredients

Sweet beetroot glaze 35% (Beetroot juice partly concentrated (68%), sugar, stabiliser: modified starch, pectin, antioxidant: ascorbic acid, preservative: potassium sorbate, acidity regulator: citric acid.), Syrup of cane sugar (Cane sugar, water), water, thickener: cellulose gum; firming agent: calcium chloride; gelling agent: sodium alginate; acidity regulator: citric acid.