

Supplier's Product Code :
 Product Added :
 Last Updated by Supplier :
 erudus id :

FB828
 17 June 2026
 17 June 2026
 8d3be7693419449a8693e2f779051def



The information on the **Erudus System** has been supplied by the manufacturers of the products and, whilst the owners of the Erudus System take steps to ensure the information is regularly updated, they give no warranty and no guarantee that the information is accurate. Product information and ingredients may change, please always read product labels carefully in addition to using the information provided by Erudus One.

We do not accept liability for any inaccuracies or incorrect information contained on this site. Please visit <http://www.erudus.com/terms-and-conditions> for full terms and conditions.

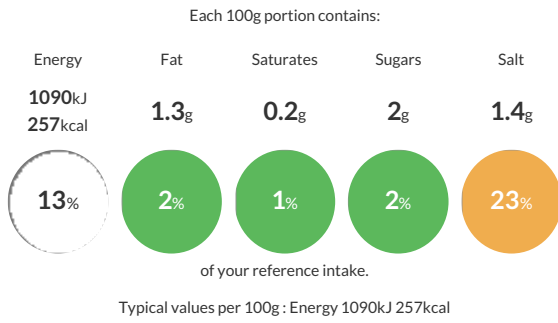
MINI WHITE TIN LOAF (RTA)

Short Product Name:
 MINI WHITE TIN LOAF

Frozen, fully baked individual moulded white bread piece

Traded Unit GTIN: **5032633158280** Internal GTIN: Supplier: **Speciality Breads Limited** Suppliers Product Code: **FB828**

Reference Intake



Nutritional Information

Typical Values	Per 100g
Energy	1090kJ 257kCal
Carbohydrates	53g
of which sugars	2g
Fat	1.3g
of which saturates	0.2g
Fibre	2.5g
Protein	9.2g
Salt	1.4g

Allergy Information

Key: **Contains** **May Contain**

Contains Cereal/Gluten	May Contain Milk	May Contain Eggs	Does Not Contain Peanuts	Does Not Contain Nuts	Does Not Contain Crustaceans	Does Not Contain Mustard
Does Not Contain Fish	Does Not Contain Lupin	Does Not Contain Sesame	Does Not Contain Celery	Does Not Contain Soya	Does Not Contain Molluscs	Does Not Contain Sulphur Dioxide

Dietary Information

Key: **Suitable for**

Suitable for Vegetarian	Suitable for Vegan	May not be suitable for Kosher	May not be suitable for Halal	NO DATA for Coeliac
-------------------------	--------------------	--------------------------------	-------------------------------	---------------------

Ingredients

Wheat Flour (Fortified with Calcium Carbonate, Iron, Niacin, Folic Acid, Thiamin), Water, Yeast, Salt, Vegetable Oils (Palm and Rapeseed), Water, Salt, Emulsifier E 471), Flour Treatment Agent: E 300.