

Supplier's Product Code :
Product Added :
Last Updated by Supplier :
erudus id :

453944
02 June 2026
02 June 2026
8d40b1023e924f059beb62c6bfe28ef6



The information on the **Erudus System** has been supplied by the manufacturers of the products and, whilst the owners of the Erudus System take steps to ensure the information is regularly updated, they give no warranty and no guarantee that the information is accurate. Product information and ingredients may change, please always read product labels carefully in addition to using the information provided by Erudus One.

We do not accept liability for any inaccuracies or incorrect information contained on this site. Please visit <http://www.erudus.com/terms-and-conditions> for full terms and conditions.

MARS 48x51g Sngl Everest GB IE

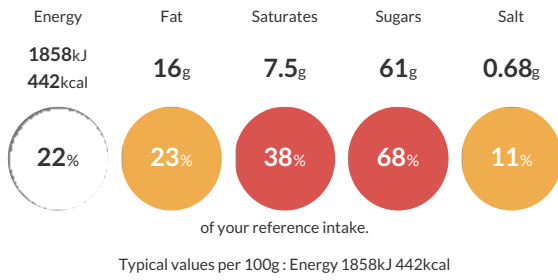
Short Product Name:
Mars Chocolate Bar 51g

Confectionery Bar

Traded Unit GTIN: **5000159551700** Internal GTIN: **5000159551694** Supplier: **Mars** Suppliers Product Code: **453944**

Reference Intake

Each 100g portion contains:



Nutritional Information

| Typical Values | Per 100g |
|--------------------|-------------------|
| Energy | 1858kJ 442kCal |
| Carbohydrates | 70g |
| of which sugars | 61g |
| Fat | 16g |
| of which saturates | 7.5g |
| Fibre | -g |
| Protein | 4.5g |
| Salt | 0.68g |

Allergy Information

Key: **Contains** **May Contain**



Dietary Information

Key: **Suitable for**



Ingredients

Sugar, Glucose Syrup, Skimmed **MILK** Powder, Cocoa Butter, Cocoa Mass, Sunflower Oil, Whey Permeate (**MILK**), Palm Fat, **MILK** Fat, Fat-Reduced Cocoa Powder, **BARLEY** Malt Extract, Salt, Emulsifier (**SOYA** Lecithin), **EGG** White Powder, Milk Chocolate contains Milk Solids 14% minimum, Milk Chocolate contains Vegetable Fats in addition to Cocoa Butter