

The information on the [Erudus System](#) has been supplied by the manufacturers of the products and, whilst the owners of the Erudus System take steps to ensure the information is regularly updated, they give no warranty and no guarantee that the information is accurate. Product information and ingredients may change, please always read product labels carefully in addition to using the information provided by Erudus One.

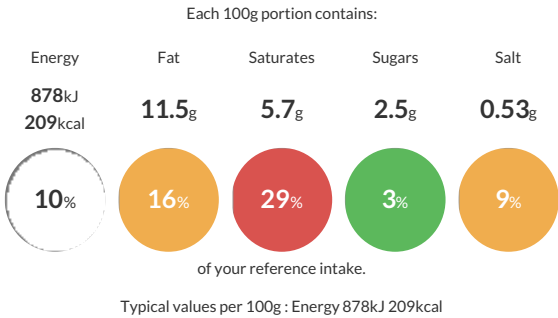
We do not accept liability for any inaccuracies or incorrect information contained on this site. Please visit <http://www.erudus.com/terms-and-conditions> for full terms and conditions.

Tom & Basil Quiche 11" (1 x 1)

11" diameter, whole quiche made with egg, diced tomato, basil and mature Cheddar cheese encased in shortcrust pastry. Approx. 12 ptns per quiche/100g per ptn. Serve hot or thaw and serve cold. Suitable for vegetarians. Made with palm from a sustainable source, RSPO certificate number: BMT-RSPO-000578. (1 x 1)

Traded Unit GTIN: 05060062473780 Internal GTIN: Supplier : Central Foods Group Ltd Suppliers Product Code : MSQW022

Reference Intake




Nutritional Information


Typical Values	Per 100g
Energy	878kJ 209kCal
Carbohydrates	21.7g
of which sugars	2.5g
Fat	11.5g
of which saturates	5.7g
Fibre	0.9g
Protein	5.4g
Salt	0.53g

Allergy Information

Key: Contains May Contain

  
Contains Cereal/Gluten


  
Contains Milk

  
Contains Eggs


  
Does Not Contain Peanuts

  
Does Not Contain Nuts

  
Does Not Contain Crustaceans


  
Contains Mustard


  
Does Not Contain Fish

  
Does Not Contain Lupin

  
Does Not Contain Sesame

  
Does Not Contain Celery

  
Does Not Contain Soya

  
Does Not Contain Molluscs

  
Does Not Contain Sulphur Dioxide

Dietary Information

Key: Suitable for

  
Suitable for Vegetarian

  
May not be suitable for Vegan

  
May not be suitable for Kosher

  
May not be suitable for Halal

  
May not be suitable for Coeliac

**Allergen Statement**  
For allergens, including cereals containing gluten, see ingredients in **CAPITALS**.

Ingredients

Pastry Case: Fortified **WHEAT** Flour (with Calcium, Iron, Niacin, Thiamine), Margarine (Palm Oil, Coconut Oil, Rapeseed Oil, Water, Salt, Emulsifier (Mono- and Diglycerides of Fatty Acids), Acidity Regulator (Citric Acid, Disodium Citrate), Natural Flavouring, Colour (Natural Carotenes)), Shortening (Palm Oil, Rapeseed Oil), Maize Flour, Water, Tomato Puree, Sea Salt. Filling: Water, Whole Liquid **EGG** (12%), Tomato (9%), Mature White Cheddar Cheese (5%) (**MILK**, Salt, Starter, Rennet, Potato Starch), Whole **MILK** Powder, Tomato Paste, Cornflour, Modified Maize Starch, Basil (0.1%), Salt, **MUSTARD** Powder, Ground White Pepper.