

The information on the [Erudus System](#) has been supplied by the manufacturers of the products and, whilst the owners of the Erudus System take steps to ensure the information is regularly updated, they give no warranty and no guarantee that the information is accurate. Product information and ingredients may change, please always read product labels carefully in addition to using the information provided by Erudus One.

We do not accept liability for any inaccuracies or incorrect information contained on this site. Please visit <http://www.erudus.com/terms-and-conditions> for full terms and conditions.

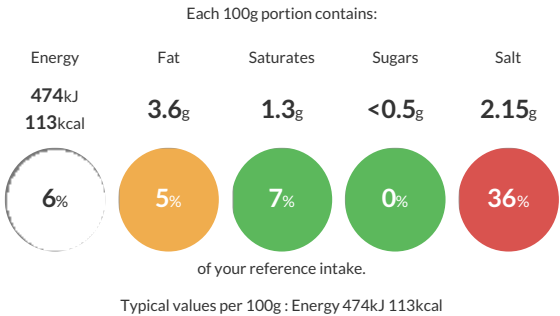
## Wessex Ham 90% (500g sliced) with added water

Short Product Name:  
Wessex Ham 90% (500g sliced) with added water

Whole cured cooked pork leg, trimmed of excess fat sliced and packed into 500g Modified Atmospheric Pressured Treys

Traded Unit GTIN: **5060996062333** Internal GTIN: Supplier: **Wessex Country Gammons Ltd** Suppliers Product Code: **100051**

### Reference Intake



### Nutritional Information

Typical Values	Per 100g
Energy	474kJ 113kCal
Carbohydrates	<0.5g
of which sugars	<0.5g
Fat	3.6g
of which saturates	1.3g
Fibre	<0.5g
Protein	20.1g
Salt	2.15g

### Allergy Information

Key: **Contains** **May Contain**



Does Not Contain Cereal/Gluten



Does Not Contain Milk



Does Not Contain Eggs



Does Not Contain Peanuts



Does Not Contain Nuts



Does Not Contain Crustaceans



Does Not Contain Mustard



Does Not Contain Fish



Does Not Contain Lupin



Does Not Contain Sesame



Does Not Contain Celery



Does Not Contain Soya



Does Not Contain Molluscs



Does Not Contain Sulphur Dioxide

Gluten Claim  
Gluten content is less than 20ppm.

### Ingredients

Pork leg, Water, Salt, Emulsifiers (E451(i)) & E450, Sugar, Preservatives E250 & 251, Antioxidant E301

### Dietary Information

Key: **Suitable for**



NO DATA for Vegetarian



NO DATA for Vegan



May not be suitable for Kosher



May not be suitable for Halal



Suitable for Coeliac