

The information on the [Erudus System](#) has been supplied by the manufacturers of the products and, whilst the owners of the Erudus System take steps to ensure the information is regularly updated, they give no warranty and no guarantee that the information is accurate. Product information and ingredients may change, please always read product labels carefully in addition to using the information provided by Erudus One.

We do not accept liability for any inaccuracies or incorrect information contained on this site. Please visit <http://www.erudus.com/terms-and-conditions> for full terms and conditions.

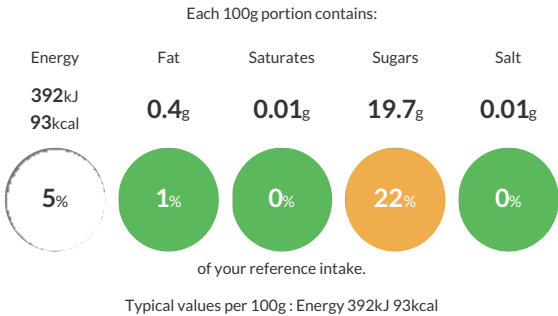
52517 1kg Strawberry Fruit Puree

Short Product Name:  
Strawberry Fruit Puree

52517 1kg Strawberry Fruit Puree

Traded Unit GTIN: 13760174986930 Internal GTIN: 3760174986933 Supplier : HB Ingredients Suppliers Product Code : FP.STRA1

Reference Intake



Nutritional Information

Typical Values	Per 100g
Energy	392kJ 93kCal
Carbohydrates	20.1g
of which sugars	19.7g
Fat	0.4g
of which saturates	0.01g
Fibre	3.2g
Protein	0.5g
Salt	0.01g

Allergy Information

Key: Contains May Contain

  
Does Not Contain Cereal/Gluten

  
Does Not Contain Milk

  
Does Not Contain Eggs

  
Does Not Contain Peanuts

  
Does Not Contain Nuts

  
Does Not Contain Crustaceans

  
Does Not Contain Mustard

  
Does Not Contain Fish

  
Does Not Contain Lupin

  
Does Not Contain Sesame

  
Does Not Contain Celery

  
Does Not Contain Soya

  
Does Not Contain Molluscs

  
Does Not Contain Sulphur Dioxide

Dietary Information

Key: Suitable for

  
Suitable for Vegetarian

  
Suitable for Vegan

  
Suitable for Kosher

  
May not be suitable for Halal

  
NO DATA for Coeliac

Ingredients

Strawberry 85,0%, sugar 14,5% , natural flavouring, purple carrot concentrate juice