

Supplier's Product Code :  
Product Added :  
Last Updated by Supplier :  
erudus id :

F02165  
15 June 2026  
15 June 2026  
90429c2f97794e8ca120354fb70977d2



The information on the [Erudus System](#) has been supplied by the manufacturers of the products and, whilst the owners of the Erudus System take steps to ensure the information is regularly updated, they give no warranty and no guarantee that the information is accurate. Product information and ingredients may change, please always read product labels carefully in addition to using the information provided by Erudus One.

We do not accept liability for any inaccuracies or incorrect information contained on this site. Please visit <http://www.erudus.com/terms-and-conditions> for full terms and conditions.

## Lemon & White Chocolate Tulip Muffin

Short Product Name:

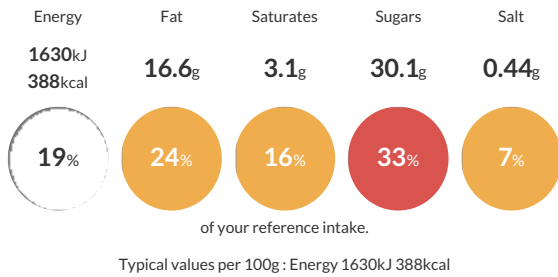
Lemon & White Chocolate Tulip Muffin

A zesty lemon flavoured muffin with luxurious white chocolate pieces, filled with lemon curd and topped with decadent sugar nibs.

Traded Unit GTIN: **05010066121651** Internal GTIN: Supplier: **Kara Foodservice (Fletchers)** Suppliers Product Code: **F02165**

### Reference Intake

Each 100g portion contains:



### Nutritional Information

Typical Values	Per 100g
Energy	1630kJ 388kCal
Carbohydrates	54.7g
of which sugars	30.1g
Fat	16.6g
of which saturates	3.1g
Fibre	0.9g
Protein	4.6g
Salt	0.44g

### Allergy Information

Key: **Contains** **May Contain**



### Dietary Information

Key: **Suitable for**



### Ingredients

Wheat Flour (<b>Wheat </b>Flour, Calcium Carbonate, Folic Acid, Iron, Niacin, Thiamin), Sugar, Rapeseed Oil, <b>Egg</b>, Lemon Curd (12%) (Sugar, <b>Egg</b>, Water, Butter (<b>Milk</b>), Concentrated Lemon Juice, Acidity Regulators: E330, E331iii; Stabiliser: E406; Flavouring), White Chocolate Chunks (11%), (Sugar, Dried Whole <b>Milk</b>, Cocoa Butter, Dried Skimmed <b>Milk</b>, Emulsifier: E322 (<b>Soya</b>); Flavouring), Humectant (E422), Cornflour, <b>Egg</b> White, Raising Agents: E450, E501; Maltodextrin, Dried Whey (<b>Milk</b>), Emulsifier: E471; Salt, Flavouring.